

# SPL3 Series

LED Sport Light 3.0 Series

**Fixture Type:**

**Project Name**

**Location:**

**Date:**

## Features

- The SPL3 series is the powerful sport light integrates a remote power system, offering unparalleled flexibility with option for standard pole mounting or remote mounting down the pole for easy access and maintenance.
- Superior high lumen output and efficiency with our meticulously engineered optics that deliver exceptional illumination.
- Constructed with a sealed die-cast profile, the SPL3 is built to withstand the toughest outdoor conditions. Its low-profile, compact design minimizes wind load requirements, ensuring stability and durability.
- Choose from NEMA 3HX3V or 4HX4V distribution patterns to tailor the light output to your specific needs.
- Available in standard 5700K, with optional 4000K and 5000K color temperatures to match your desired ambiance.
- Operates efficiently across a broad input voltage range of 200-480V.
- Built in surge suppression with a maximum rating of 40KV ensure reliable performance.
- Come with aiming laser make installation easier for high elevation sport light.



500W/600W



850W/1200W



## Specification

<b>Material</b>	Sealed die-casting aluminum	<b>Efficacy</b>	Up to 150 lm/W
<b>Distribution Type</b>	NEMA 3HX3V or 4HX4V	<b>LED Life Span</b>	100,000 Hrs
<b>Color Temp</b>	Standard 5700K Optional 4000K,5000K	<b>Dimmable</b>	0-10V Dimming
<b>CRI</b>	70	<b>Lumen Output</b>	500W 68,000 lumen 600W 90,000 lumen 850W 115,000 lumen 1200W 160,000 lumen
<b>Input Voltage</b>	505W 120-277V 600W/850W/1200W 200-480V	<b>Warranty</b>	10 Year
<b>Mounting</b>	Standard pole and cross arm mounted Optional remote driver mount.	<b>Ambient Operation Temperature</b>	-40°C (-40°F) ~45°C (113°F)
<b>EPA</b>	505W/600W 1.9 850W/1200W 2.6	<b>Certifications</b>	UL Listed IP65 Rated



# SPL3 Series

LED Sport Light 3.0 Series

Fixture Type:

Project Name

Location:

Date:

## Ordering Guide

Example: SPL3-850W57K-UHV-NE4-SPL-TRSPA

SKU	Wattage	Color Temp.	Voltage	Optics
SPL3	1500W =500 Watts	57K = 5700K	USV =120-277V	NE3 = NEMA 3HX3V
	600W = 600 Watts	40K = 4000K	UHV = 200-480V	NE4 =NEMA 4HX4V
	850W = 850 Watts	50K = 5000K		
	1200W =1200 Watts			

Notes: 1. Only 500W optional for 120-277V input voltage.

2. Standard CCT is 5700K, optional 4000K and 5000K are available upon special order. please contact factory to check availability.

## Standard Mounting Optional Accessory



SPL-TRSPA

= Yoke mount adaptor

SPL-SQSPA

=Square Beam Mounting Bracket

## Remote Mounting Optional Accessory



PBMOUNT

(SKU:SPL3-PBMOUNT)

= Power box mounting rail for remote power mount

EXTCABLE

(SKU:SPL3-EXTCABLE)

=50m extension cable



# SPL3 Series

LED Sport Light 3.0 Series

<b>Fixture Type:</b>
<b>Project Name</b>
<b>Location:</b>
<b>Date:</b>

## Product Information

WATTAGE	EPA	4000K		5000K		5700K	
		LUMEN	EFFICACY	LUMEN	EFFICACY	LUMEN	EFFICACY
500W	<b>1.9</b>	70,000lm	140lm/W	70,000lm	140lm/W	68,000lm	136 lm/W
600W		92,000lm	153lm/W	92,000lm	153lm/W	90,000lm	150lm/W
850W	<b>2.6</b>	120,000lm	141lm/W	120,000lm	141 lm/W	115,000lm	135lm/W
1200W		165,000lm	138lm/W	165,000lm	138lm/W	160,000lm	133lm/W

# SPL3 Series

LED Sport Light 3.0 Series

<b>Fixture Type:</b>
<b>Project Name</b>
<b>Location:</b>
<b>Date:</b>

## Standard Pole Mount

The fixture with separate power can be installed on the top of the light pole as a whole unit, which is simple and fast way, without additional labor costs to install the driver. It is also beneficial to reduce the power consumption of fixtures caused by remote wiring, save energy and improve efficiency.



## SPL3 Series

LED Sport Light 3.0 Series

Fixture Type:

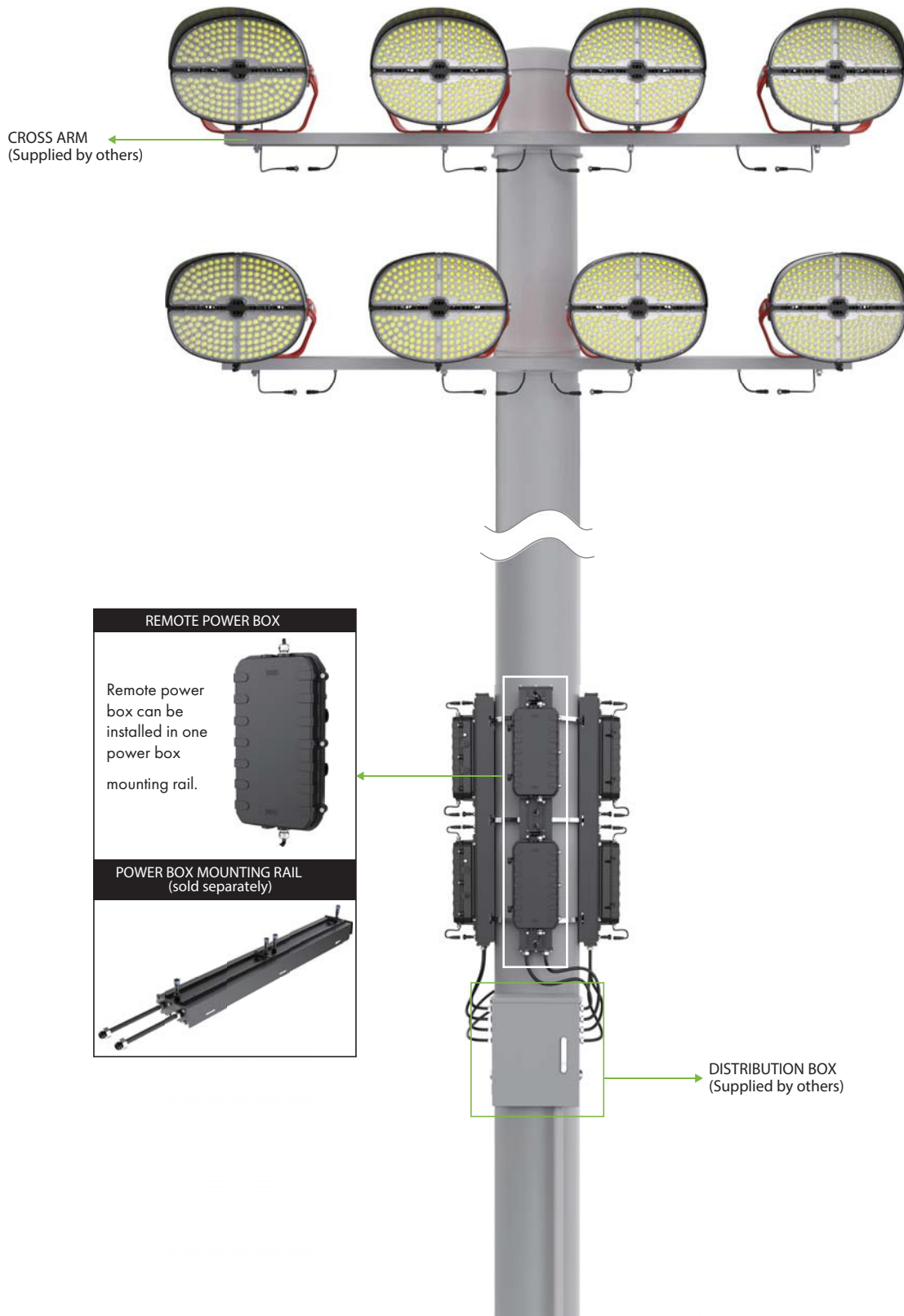
Project Name

Location:

Date:

### Remote Power Box Mount (Optional)

The SPL3 series supports remote installation of the drive power - simple installation, access and maintenance of the equipment can be met by placing the drive power of the fixture at the bottom of the pole by using a fixture and extension power cord (sold separately).



## SPL3 Series

LED Sport Light 3.0 Series

Fixture Type:

Project Name

Location:

Date:

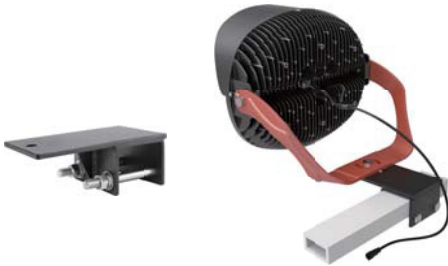
### Standar Mounting Optional Accessory



**Yoke Mount Adaptor**

**SKU: SPL-TRSPA**

- Apply the fixture on a 2 3/8" tennon with Yoke adaptor.



**Square Beam Mounting Bracket**

**SKU: SPL-SQSPA**

- Apply the fixture to cross arm without drilling on the arm.

### Remote Mounting Optional Accessory



**Power box mounting rail for remote power mount**

**SKU: SPL3-PBMOUNT**

- Driver box mounting rail, mount up to 2 driver.



**Extension Power Cable**

**SKU: SPL3-EXTCABLE**

-160 ft length extension cable.