

WCS41 Series

LED Wall Cylinder Downlight only Wattage selectable and 5CCT

Fixture Type:

Project Name

Location:

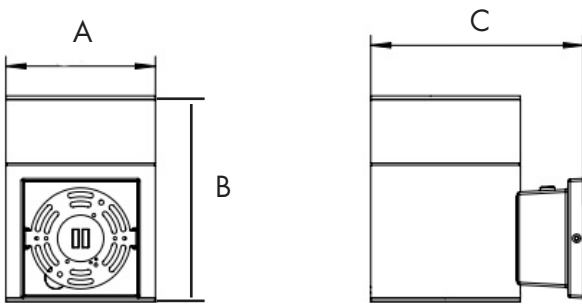
Date:

Features

- A perfect blend of elegance and efficiency LED wall cylinder, offers superior brightness and energy efficiency compared to traditional lighting solution.
- 4" round head sizes with down light options, catering to various aesthetic preferences and spatial requirements.
- Wattage selectable and 5CCT adjustable that suits your lighting needs, ensuring optimal brightness and energy efficiency.
- 60 degree beam angle provides a wide and even light distribution, minimizing shadows and dark spots for a well-lit environment.
- Optional emergency battery backup , providing additional safety.
- Suitable for wet location.



Dimensions



	A	B	C
WCS41	4"	7.4"	4.72"

Specification

Material	Rugged cast aluminum housing	Efficacy	Up to 100 lm/W
Lens	Polycarbonate Lens	LED Life Span	50,000 hrs
Beam angle	60 degree	Dimmable	0-10V Dimming
IColor Temp	5CCT 2700K/3000K/3500K/4000K/5000K	Lumen Package	600 lm to 1,800 lm
CRI	70	Warranty	5 Years
Input Voltage	110-277V	Ambient Operation Temperature	-20°C (-4°F) ~45° C(113°F)
Installation	Wall mount	Listing	ETL IP65

WCS41 Series

LED Wall Cylinder Downlight only Wattage selectable and 5CCT

Fixture Type:
Project Name
Location:
Date:

Ordering Guide

Example: WCS41-5CCT-EM8



Fixture Type

Color Temperature

Finish



WCS41

5CCT
=27K/30K/35K/40K/50K

BK= Black

Optional Accessories

Emergency Battery Backup

Photocell



EM8

PC

(SKU:WCS-EMBK-8W)
= 8W Emergency battery
backup,
internal pre-install.

=Internal Photocell pre-install



WCS41 Series

LED Wall Cylinder Downlight only Wattage selectable and 5CCT

Fixture Type:
Project Name
Location:
Date:

Product Information

WCS41-4" Downlight		5000K
WATTAGE	LUMEN	EFFICACY
13W	1300lm	100lm/W
10W	1000lm	100lm/W
7W	700lm	100lm/W

WCS41 Series

LED Wall Cylinder Downlight only Wattage selectable and 5CCT

Fixture Type:

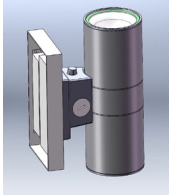
Project Name

Location:

Date:

Optional Accessories

Emergency Battery Backup:



Internal 4W Emergency Battery Backup

SKU: WCS-EMBK-4W

- Internal battery backup is pre-install by request
- 90 minutes emergency operation
- Provide up to 400 lumen during emergency mode

Photocell:



Internal Photocell

- Internal photocell is pre-install by request
- Dusk to dawn photocell control.