

Installation Instruction

WARNING

To reduce the risk of death, personal injury or property damage from fire, electric shock, falling parts, cuts/abrasions, and other hazards, please follow these precautions:

- Commercial installation, service, and maintenance of luminaires should be performed by a qualified licensed electrician.
- For installation: If you are unsure about the installation or maintenance of the luminaires, consult a qualified licensed electrician and check your local electrical code.

Before installing, servicing, or performing routine maintenance upon this equipment, follow these general precautions.

- Turn off electrical power at the fuse or circuit breaker box before wiring the fixture to the power supply. Always turn off the power when performing any maintenance.
- Verify that the supply voltage is correct by comparing it with the luminaire label information.
- All wiring connections should be capped with UL approved wire connectors.
- Do not make or alter any open holes in an enclosure of wiring or electrical components during kit installation.
- To prevent wiring damage or abrasion, do not expose wiring to edges of sheet metal or other sharp objects.

CAUTION

- Avoid direct eye exposure to the light source while it is on.
- Account for small parts and dispose of packing material properly, as these may be hazardous to children.
- Risk of burns. Disconnect power and allow the fixture to cool before changing the bulb or handling fixture.

REMARK

- Green ground screw provided in proper location. Do not relocate.
- Ensure a minimum 90° angle for supply conductors.
- Suitable for Dry or Damp location.
- Specifications and dimensions subject to change without notice.

COMPATIBLE DIMMER LIST

Leviton: DSL06, TSL06, 6674, 6672-1LW, 6672-ILT, IPL06, RNL06-10Z

Lutron: MSCL-OP153M, SCL-153P, DVWCL-153PH, DVCL-153P, MACL-153M, TGCL-153PH,
PD-6WCL, MA-R, DVLV-603P, SELV-300P-WH, AYCL-153P

GE: 10464

HARDWARE INCLUDED

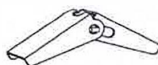
NOTE: Hardware not shown to actual size.



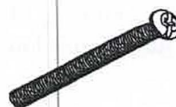
A



B



C



D



E



F

Installation Instruction

Part	Description	Quantity
A	Wire Nuts	3 pcs
B	Outlet Box Screws (M4x25MM)	2 pcs
C	Fastening Clip	4 pcs
D	M4x60 Screw	4 pcs
E	M4x30 Screw	4 pcs
F	Expansion Tube	4 pcs

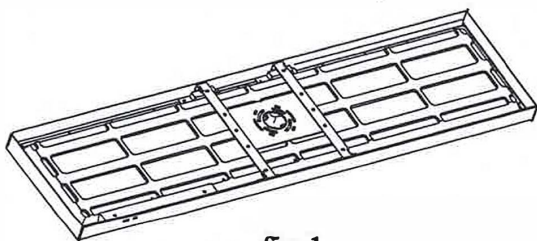


fig.1

Step 1: Unpacking (fig.1)

This luminaire has been properly packed, should be no part damaged during the transit. Inspect after opening the package to confirm if anything missing or damaged.

Step 2: Mounting the backplane (fig.2)

Please refer to A1 for gypsum material ceiling and A2 for other material ceiling.

A1: Remove the mounting backplane from the fixture. Drill four holes where marked using a 1/2 in. drill bit. Attach mounting backplane to the electrical box using mounting screws (B) provided. Then insert the screw D through the front of the mounting plate(as B1) to the clip C (as B2). Tighten the clip C and reattach the backplane to the ceiling until screw D tightens. Repeat for all four holes.

A2: Remove the mounting backplane from the fixture. Drill four holes where marked using a 1/2 in. drill bit. Insert the screw F to these four holes. Attach mounting backplane to the electrical box using mounting screws (B) provided. Use screw E through the front of the mounting plate, secure it to F, and until it tightens. Repeat for all four holes.

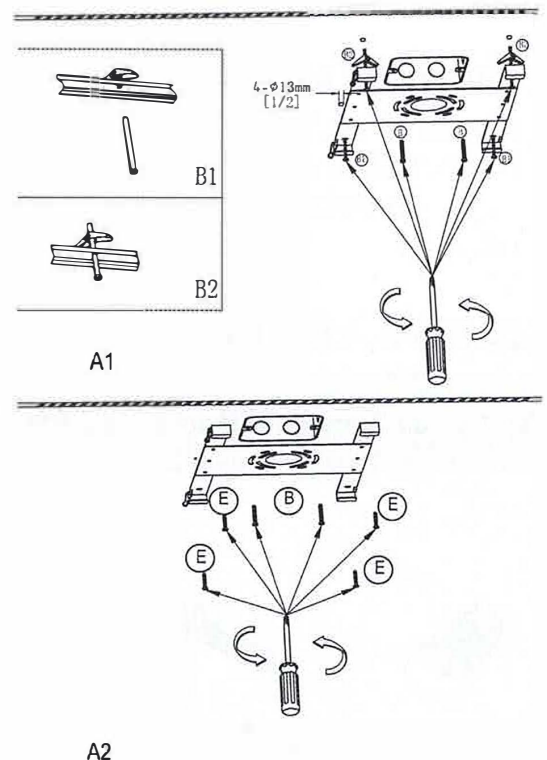
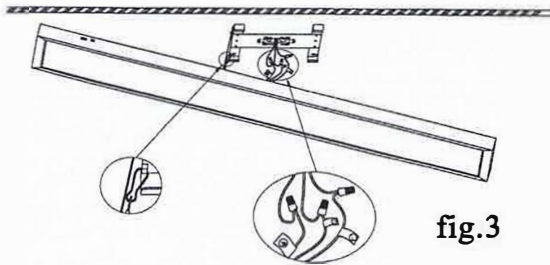


fig.2

Installation Instruction



Step 3: Hanging the panel and wiring (fig.3)

Hold the LED panel up to the secured backplane, and hang the safety rope to specially designed slots of the backside of the fixture temporarily to prevent the fixture from moving while wiring. Use wire nuts A to connect the ceiling wires with the fixture wires. Identify the wiring: (black - live, white - neutral and green - ground).

Step 4: Selecting CCT & wattage and locking the fixture (fig.4)

Select desired color temperature (CCT) & Wattage. Once the fixture has been raised and is flush to the ceiling, lock the fixture by moving it towards the opposite direction.

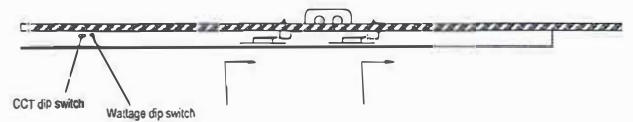


fig.4

Turn on the main power. Installation is complete.