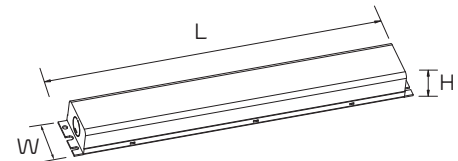


## Features

- External emergency battery backup
- Output power: 25 watts
- Output voltage: 170 VDC
- Input current: 110mA
- Input voltage 100-277Vac
- Emergency operation: 90 Minutes
- Operating Temp 0 to 50 °C
- Lithium Battery
- Recharge 36 hrs
- Luminaire load power 200W Max



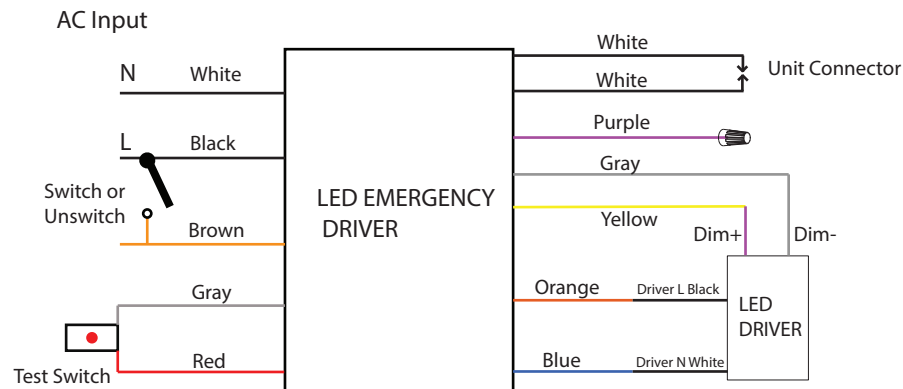
## Dimension



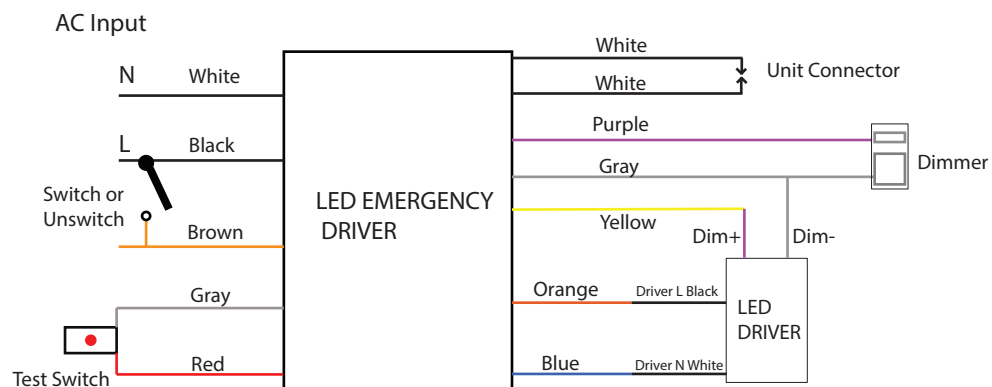
L 15.4" X W 2.13" X H 1.57"

## Wiring Diagram

### Wiring diagram without external dimmer



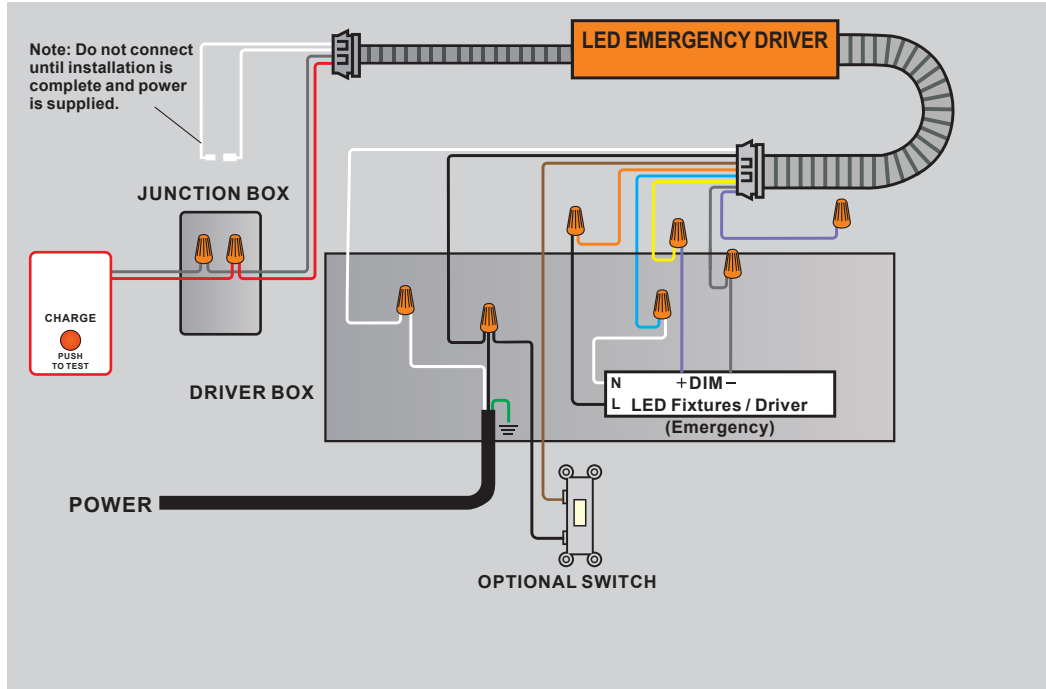
### Wiring diagram with external dimmer



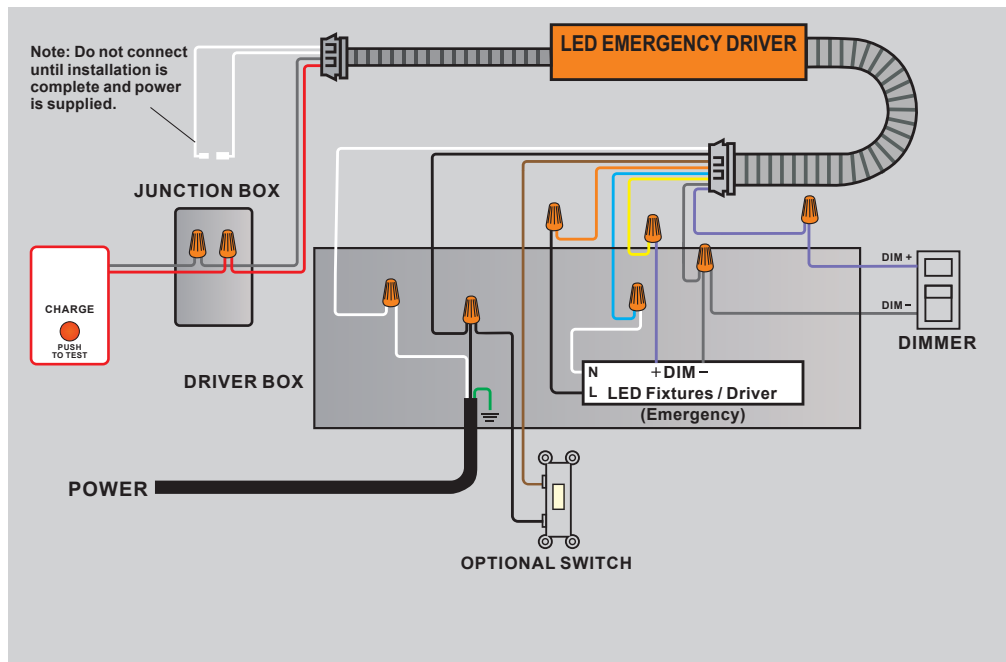
Last Rev 10/19/2021



### Wiring diagram without external dimmer

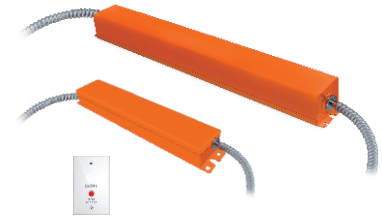


### Wiring diagram with external dimmer



# EMERGENCY LED DRIVERS

Low Voltage / High Voltage Versions



## FREQUENTLY ASKED QUESTIONS

### Q1 Why does the LED emergency driver's red indicator flash (once a second)?

It is operating incorrectly.

The LED emergency driver has self-testing function, and the indicator flashing once a second means "incorrect wiring" or "low battery".

First, please check if it's wired correctly according to the wiring diagram;

Second, if the wiring is correct, please charge for 10 hours.

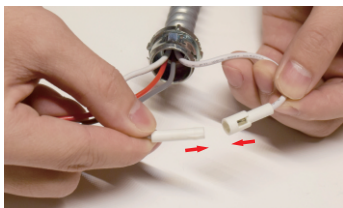
If it's still flashing after those 2 steps, please contact the factory for further consulting.

### Q2 Why does the LED emergency driver's red indicator flash (twice a second)?

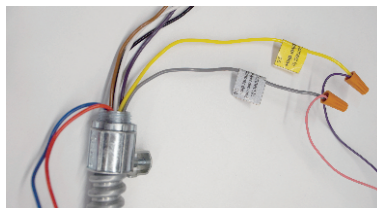
It is operating incorrectly.

The LED emergency driver has a self-testing function, and the indicator flashing twice a second means "incorrect wiring". Please double check if it's wired correctly according to the wiring diagram, by following :

- Check whether the two white battery wires are connected together.



- Check whether the two dimming wires are connected correctly if the high power version (EM-H series) .



- If it's still flashing with correct wiring, please contact factory for further consulting.

### Q3 Why is the LED emergency driver's red indicator off?

It means "abnormal".

Reason 1: Main power not connected;

Reason 2: Incorrect wiring

Please double check whether the main power and wiring it is correct. If it's still off, please contact factory for further consulting.

### Q4 Why does the LED emergency driver work less than 90 minutes?

There are 3 reasons.

First, it happens when the LED emergency driver is not fully charged. Please ensure enough charging time, 24 hours for 8W and 36 hours for 25w.

Second, it happens in high power version (EM-H when the emergency power is more than rated power).

Third, defective battery, please contact factory for further consulting.

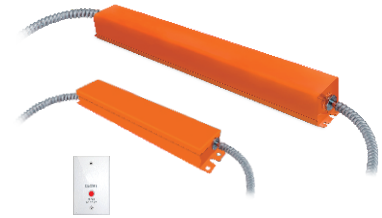
### Q5 Why the LED luminaire flashes for a few seconds after wired to LED emergency driver?

It is operating correctly.

The LED emergency driver is conducting its first self-testing function once wired and powered on, so it will automatically disconnect the main power and test.

# EMERGENCY LED DRIVERS

Low Voltage / High Voltage Versions



## FREQUENTLY ASKED QUESTIONS

**Q6** Why does the LED luminaire flash “off” and “on” with low brightness and then “off” and on at 100% brightness after being connected to the high voltage LED emergency driver?

It is operating correctly.

This high voltage LED emergency driver has 0-10V dimming function and it will conduct first self-testing once wired and powered on.

During self-testing, the battery takes the following actions: Disconnect the main power- LED emergency driver works and dims down the LED luminaire -Connect the main power.

**Q7** Why every month does the LED luminaire flash “off” and “on” with low brightness and then “off” and on at 100% brightness after being connected to the high voltage LED emergency driver?

It is operating correctly.

The LED emergency driver conducts MONTHLY self-testing and it has 0-10V dimming function.

Here are the self-testing steps: Disconnect the main power- LED emergency driver works and dims down the LED luminaire -Connect the main power.

**Q8** Why does the LED luminaire turn on and then off in emergency mode for an instant?

It happens when the LED emergency driver wattage is too low and it can't power the high wattage LED luminaire.

**Recommended compatibility based on driver wattage:**

Items for LED emergency driver	Compatible LED Luminaire
Low Voltage 8W	Up to 100W LED luminaire with external driver
Low Voltage 25W	Up to 300W LED luminaire with external driver
High Voltage 8W	<b>Situation 1) Without 0-10V dimming function</b> – Compatible for $\leq 8W$ LED luminaire with internal driver.  <b>Situation 2) With 0-10V dimming function</b> -Compatible for up to 100w LED luminaire with internal or external driver. -Minimum Dim-down Power $\leq$ Output Power of LED emergency driver  (e.g: 60W LED panel, 10%~100% dimming range, and the minimum dim-down power is 6W. It can work since it is less than 8W LED emergency driver) .
High Voltage 25W	<b>Situation 1) Without 0-10V dimming function</b> – Compatible for $\leq 25W$ LED luminaire with internal driver.  <b>Situation 2) with 0-10V dimming function</b> -Compatible for up to 300w LED luminaire with internal or external driver. -Minimum Dim-down Power $\leq$ Output Power of LED emergency Driver.  (e.g: 200W LED highbay, 10%~100% dimming range, and the minimum dim-down power is 20W. It can work since it is less than 25W LED emergency driver).