

ALC Architectural Linear Series

Wall Mount Linear Run Luminaire

Fixture Type:

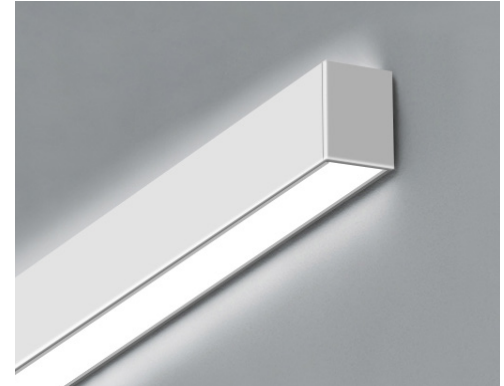
Project Name:

Location:

Date:

Features

- 2.3 wide architectural linear luminaire available in 2'/3'/4'
- Wattage switchable (50%/75%/100%)
- 3CCT Color Temperature adjustable (3000K/35000K/4000K)
- 7 embedded adjustable light distribution by dip switch
100% up / 100% down/ 50% up 50% down/ 10% up 90% down
30% down 70% up/ 70% down 30% up /90% up 10% down
- Extruded aluminum housing
- 4 Lens options
- Various mounting option include suspended mount, wall mount and surface mount
- 120V continuous run up to 40FT and 277V up to 100FT



Product Performance Standard

Size	2/4 x 2.3in W X 3.4in H	Power Factor	80
Weight	6 lb	Life Span	50,000
Mounting	Wall Mount	Dimmable	1-10V Dimming
Color Temp	3 CCT	Efficacy	up to 115 lm/W
CRI	80	Warranty	5 Years
Input Voltage	120-277V	Ambient Operation Temperature	0C° (32°F) ~ 40° (104°F)



Ordering Guide

Example: ALC-DUW3CCTAWH4'

Fixture Type	Lens	Wattage	CCT	Light Distribution	Finish	Linear Feet
ALC	D = Diffuser C = Conves L = Louver R = Reflector	UW = Wattage Selectable 50%/70%/100%	3CCT = Adjustable color Temp. (30K/35K/40K)	A = Light Distribution Selectable 100% down 100%up 50%up50%down 10%up90%down 90%up10%down 70%up30%down 30%up70%down	WH = White BK = Black	Nominal linear feet = in increments of 4' fixture lengths come in 2' / 3' / 4'

Last updated: 12-8-2022



ALC Architectural Linear Series

Wall Mount Linear Run Luminaire

Fixture Type:

Project Name:

Location:

Date:

Wall Mount Kit

STEP 2

Mounting



AL-W2 =Wall Mount Kit for 2ft fixture

AL-W4 =Wall Mount Kit for 4ft fixture

Linear Run Connector

STEP 3

Linear run connector



ALC-FC = Inline connector

Optional

STEP 4

Emergency Battery Backup



EM= Emergency battery backup
(EMBK8WH-A-EXT02)

Diffuser Lens Roll



LR42 = 42' diffuser lens roll

End of the ordering step

ALC Architectural Linear Series

Wall Mount Linear Run Luminaire

Fixture Type:

Project Name:

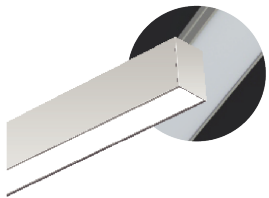
Location:

Date:

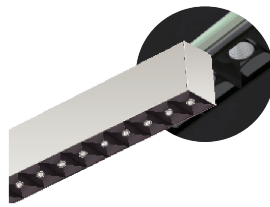
Performance Data:

Lens	Diffuser	Louver	Micro Reflector	Convex
Lengths	2ft, 4ft	2ft, 4ft	2ft, 4ft	2ft, 4ft
Wattage	20W/ 40W	20W/ 40W	20W/ 40W	20W/ 40W
Efficacy	115lm/W	90lm/W	115lm/W	95lm/W

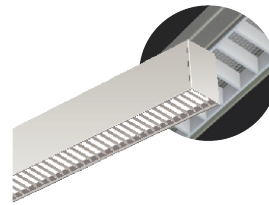
Lens:



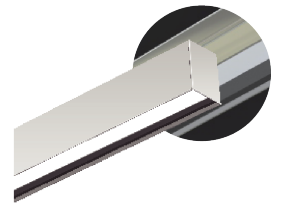
Diffuser
(-D)



Micro Reflector
(-R)



Louver
(-L)



Convex Lens
(-C)

ALC Architectural Linear Series

Wall Mount Linear Run Luminaire

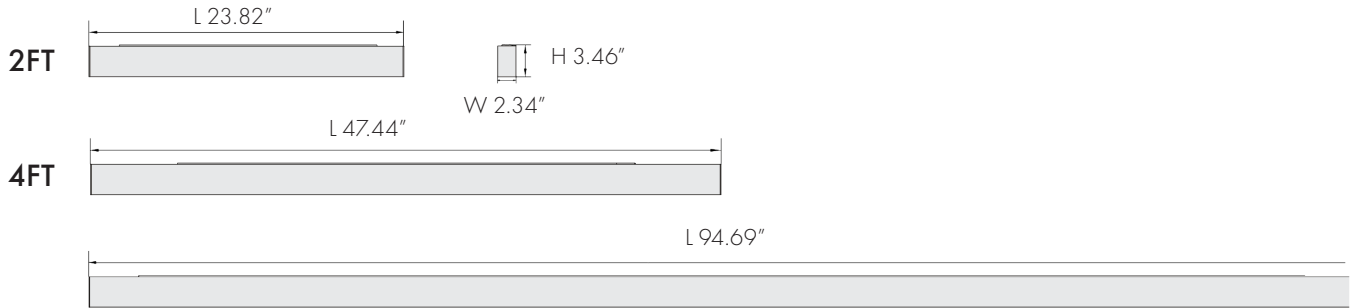
Fixture Type:

Project Name:

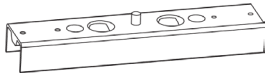
Location:

Date:

Dimensions:



Line Connection:



Linear Connector
(-ALC-FC)

120Vac: Connections up to 40ft
277Vac: Connections up to 100ft

