

# ALC Architectural Linear Series

Surface Mount Pattern Run Luminaire

**Fixture Type:**

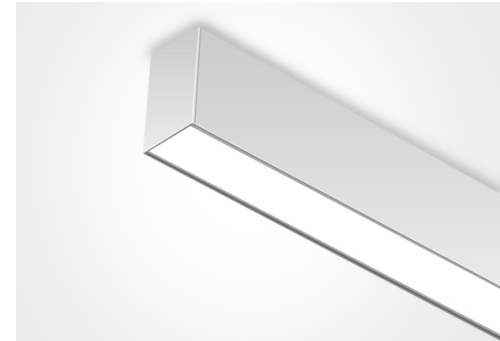
**Project Name:**

**Location:**

**Date:**

## Features

- 2.3 wide architectural linear luminaire available in 2ft/3ft/4ft/8ft
- Wattage switchable ( 50%/75%/100%)
- 3CCT Color Temperature adjustable (3000K/3500K/4000K)
- 7 embedded adjustable light distribution by dip switch  
100% up / 100% down/ 50% up 50% down/ 10% up 90% down  
30% down 70% up/ 70% down 30% up /90% up 10% down
- Extruded aluminum housing
- 4 Lens options
- Various mounting option include suspended mount, wall mount and surface mount
- 120V continuous run up to 40FT and 277V up to 100FT



## Product Performance Standard

<b>Size</b>	2/4/8FT x 2.3in W X 3.4in H	<b>Power Factor</b>	80
<b>Weight</b>	6 lb	<b>Life Span</b>	50,000
<b>Mounting</b>	Suspended Mount	<b>Dimmable</b>	1-10V Dimming
<b>Color Temp</b>	3 CCT	<b>Efficacy</b>	up to 115 lm/W
<b>CRI</b>	80	<b>Warranty</b>	5 Years
<b>Input Voltage</b>	120-277V	<b>Ambient Operation Temperature</b>	0C° (32°F) ~ 40° (104°F)



## Ordering Guide

Example: ALC-DUW3CCTAWH4'

Fixture Type	Lens	Wattage	CCT	Light Distribution	Finish	Linear Feet
ALC	D = Diffuser C = Conves L = Louver R = Reflector	UW = Wattage Select- able 50%/70%/100%	3CCT = Adjustable color Temp. (30K/35K/40K)	A = Light Distribution Selectable 100%down	WH = White BK = Black	Nominal linear feet = in increments of 4' fixture lengths come in 2' / 3' / 4' / 8'

# ALC Architectural Linear Series

Surface Mount Pattern Run Luminaire

<b>Fixture Type:</b>
<b>Project Name:</b>
<b>Location:</b>
<b>Date:</b>

## Surface Mount Kit

### STEP 2

#### Mounting



- AL-S2 = Surface Mount Kit for 2ft fixture
- AL-S4 = Surface Mount Kit for 4ft fixture
- AL-S8 = Surface Mount Kit for 8ft fixture

## Pattern Run Connector

### STEP 3

**ALC-CC = Cross Connector**

A'	B'	C'	D'
<input type="checkbox"/>	<input type="checkbox"/>	<input type="checkbox"/>	<input type="checkbox"/>

**ALC-YC = Y Connector**

A'	B'	C'	D'
<input type="checkbox"/>	<input type="checkbox"/>	<input type="checkbox"/>	<input checked="" type="checkbox"/>

**ALC-VC = V Connector**

A'	B'	C'	D'
<input type="checkbox"/>	<input type="checkbox"/>	<input checked="" type="checkbox"/>	<input checked="" type="checkbox"/>

**ALC-TC = T Connector**

A'	B'	C'	D'
<input type="checkbox"/>	<input type="checkbox"/>	<input type="checkbox"/>	<input checked="" type="checkbox"/>

**ALC-LC = L Connector**

A'	B'	C'	D'
<input type="checkbox"/>	<input type="checkbox"/>	<input checked="" type="checkbox"/>	<input checked="" type="checkbox"/>

**C = Custom Pattern**

## Optional

### STEP 3

#### Emergency Battery Backup



EM= Emergency battery backup (EMBK8WH-A-EXT02)

#### Diffuser Lens Roll



LR42 = 42' diffuser lens roll

End of the ordering step

# ALC Architectural Linear Series

Surface Mount Pattern Run Luminaire

**Fixture Type:**

**Project Name:**

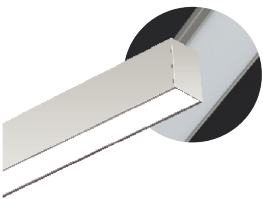
**Location:**

**Date:**

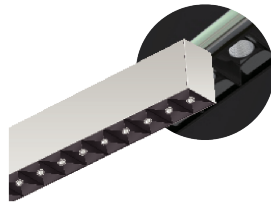
## Performance Data:

Lens	Diffuser	Louver	Micro Reflector	Convex
Lengths	2ft, 4ft, 8ft	2ft, 4ft, 8ft	2ft, 4ft, 8ft	2ft, 4ft, 8ft
Wattage	20W/ 40W/ 80W	20W/ 40W/ 80W	20W/ 40W/ 80W	20W/ 40W/ 80W
Efficacy	115lm/W	90lm/W	115lm/W	95lm/W

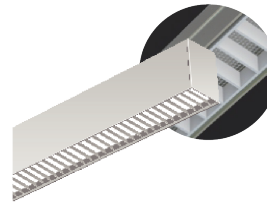
## Lens:



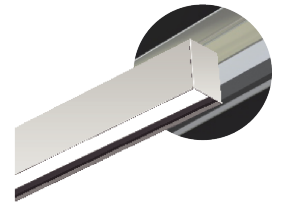
Diffuser  
(-D)



Micro Reflector  
(-R)



Louver  
(-L)



Convex Lens  
(-C)

# ALC Architectural Linear Series

Surface Mount Pattern Run Luminaire

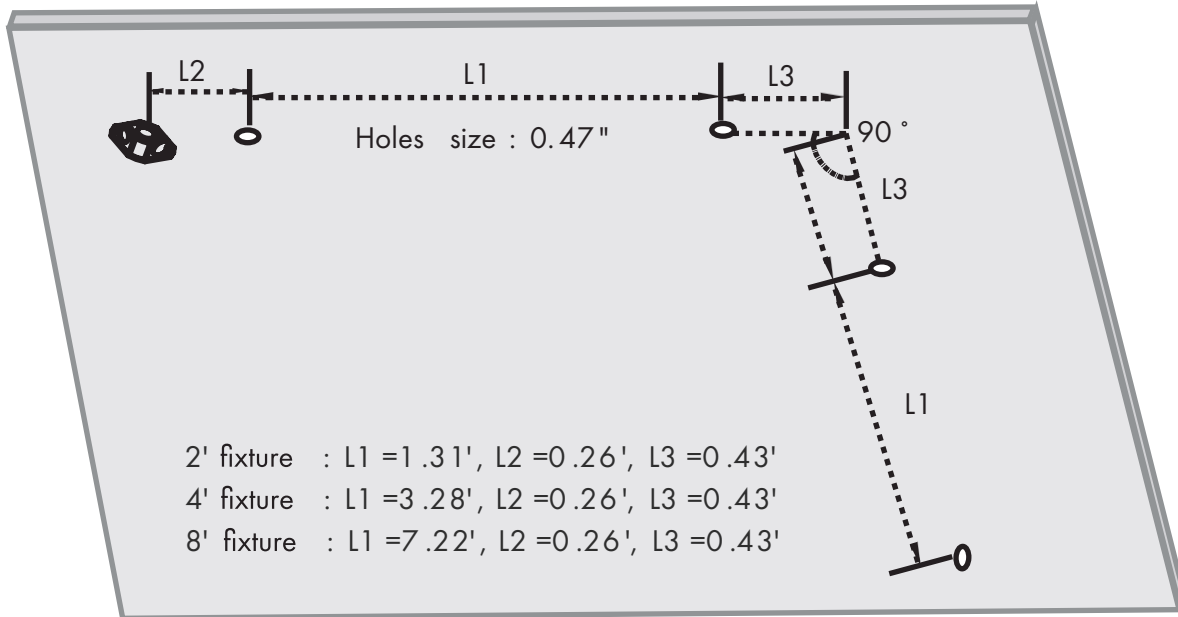
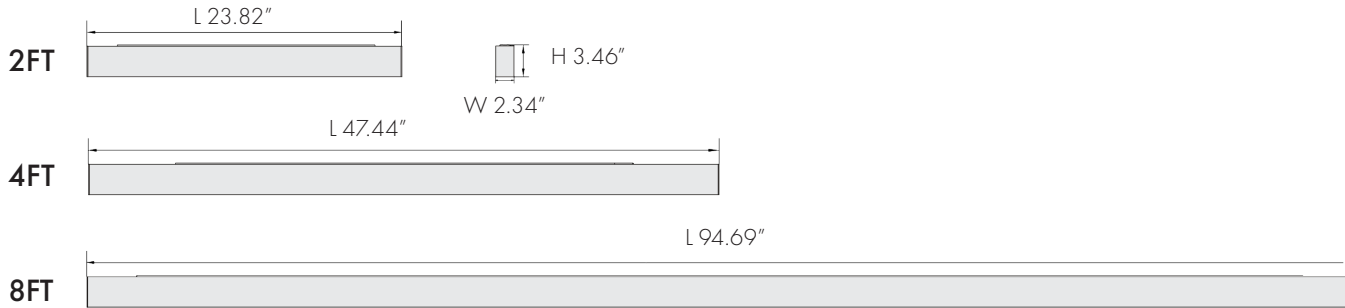
**Fixture Type:**

**Project Name:**

**Location:**

**Date:**

## Dimensions:



# ALC Architectural Linear Series

Surface Mount Pattern Run Luminaire

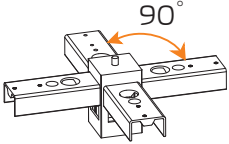
**Fixture Type:**

**Project Name:**

**Location:**

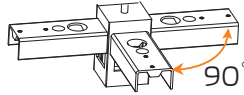
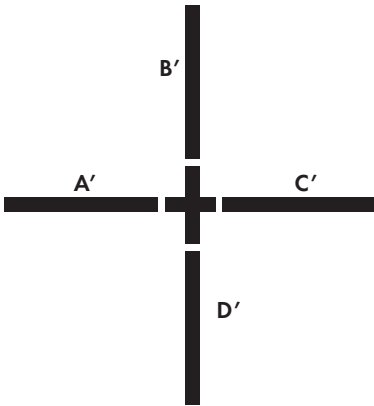
**Date:**

## Pattern Connector:



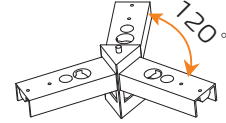
### Cross Connector

Provide A/B/C/D dimension  
 Example: A=4', B=4', C=4', D=4'  
 Part number:  
 ALC-CC4444



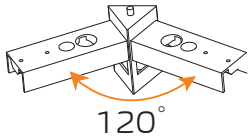
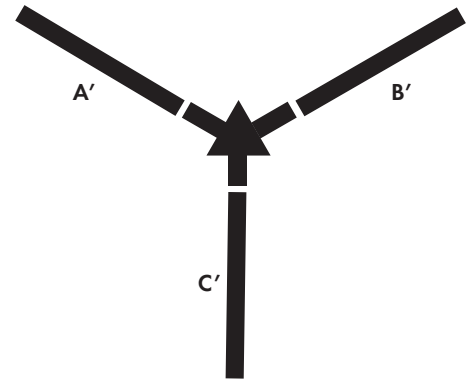
### T Shape Connector

Provide A/B/C dimension  
 Example: A=4', B=2', C=4'  
 Part number:  
 ALC-TC424



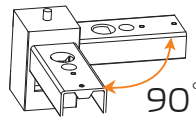
### Y Shape Connector

Provide A/B/C dimension  
 Example: A=4', B=4', C=4'  
 Part number:  
 ALC-YC444



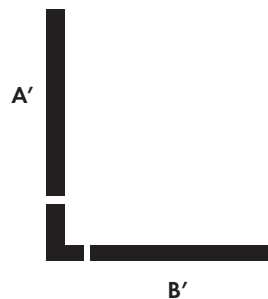
### V Shape Connector

Provide A/B dimension  
 Example: A=4', B=4'  
 Part number:  
 ALC-VC44



### L Shape Connector

Provide A/B dimension  
 Example: A=4', B=4'  
 Part number:  
 ALC-IC44



Standard pattern shape  
 Mounting Points:

25.56" for 2' fixture  
 50.64" for 4' fixture  
 100.92" for 8' fixture



