



# LED Ultra Slim Surface Mount Downlight-Installation and Operating Guide

## PACKAGE CONTENTS

Make sure all parts are present before beginning installation of this product. Compare package contents with parts list and diagram shown here. If parts are missing or damaged, do not assemble, install or operate this product.



## PRODUCT ELECTRIC RATING

PRODUCT	WATT	OUTPUT CURRENT	INPUT VOLTAGE
7" DOWNLIGHT	15W	110 MA	AC120V 60HZ
12" DOWNLIGHT	15W	110 MA	AC120V 60HZ

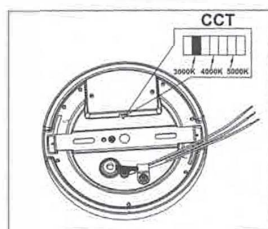
## 1. Installation Preparation

1. Select color and move the CCT switch, you can change

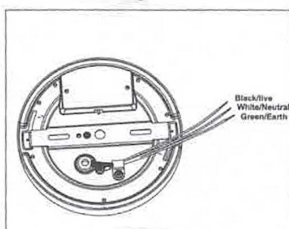
the color temperature to: 3000k/4000k/5000k by the

CCT switch (If CCT selectable applicable).

### 1 CCT Adjustable



### 2 Wiring Guide



2. Turn power OFF from the electrical panel before starting installing

## 2. Wiring Instruction

1. Open the hardwire box swing cover and remove one of the knock out holes on the side of the electrical box, based on the installation position
2. Feed the wires from the electrical source through the open knock out hole in the electrical box
3. Connect black wire to live wire, white wire to neutral wire, and green wire with ground (as shown) and secure using wago connector. Close the cover of the box.



## ! CAUTION

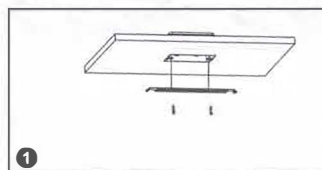
### READ THESE IMPORTANT SAFETY INSTRUCTIONS

Please read and understand this entire manual before attempting to assemble operate or install this product

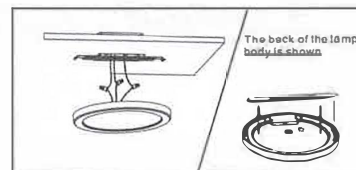
1. RISK OF FIRE OR ELECTRIC SHOCK: The electrical rating of this product in 120V AC.
2. Danger-Risk Of Shock-Disconnect Power Before Installation
3. WARNING-To prevent wiring damage or abrasion, do not expose wiring to edges of sheet metal or other sharp objects.
4. Suitable for damp locations.
5. This product must be installed in accordance with any applicable installation code(s) by a qualified electrician or person familiar with the construction and operation of the product and the hazards involved.
6. This Device Is Not Intended For Using With Emergency Exits

**BE SURE THE POWER IS OFF TO AVOID POSSIBLE ELECTRIC SHOCK BEFORE INSTALLATION**

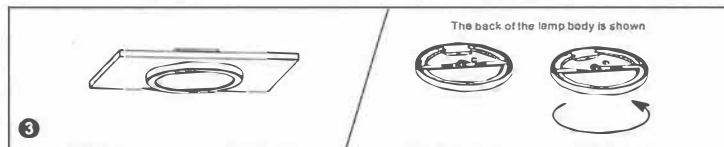
## 3. Fixture Installation



1. Fixing bracket on terminal box



2. Wiring and color temperature adjustment (see operation guide)



3. Fixing the lamp body on bracket and fix tightly

## 4. Package Contents

Part	Description	Qty
-	LED Round Surface Slim Panel Fixture	1
A	Rubber Plug	2
B	Wiring Cap	2
C	Long screw 1.05 inch	2
D	Self-tapping screw 1 inch	2
E	5" Bracket	1
F	7" Bracket	1
G	9" Bracket	1
H	12" Bracket	1
-	Box	1
-	Installation Instructions	1

