

INSTALLATION INSTRUCTIONS

LED MINI STEP LIGHT

Input Volt. 120V 50/60Hz

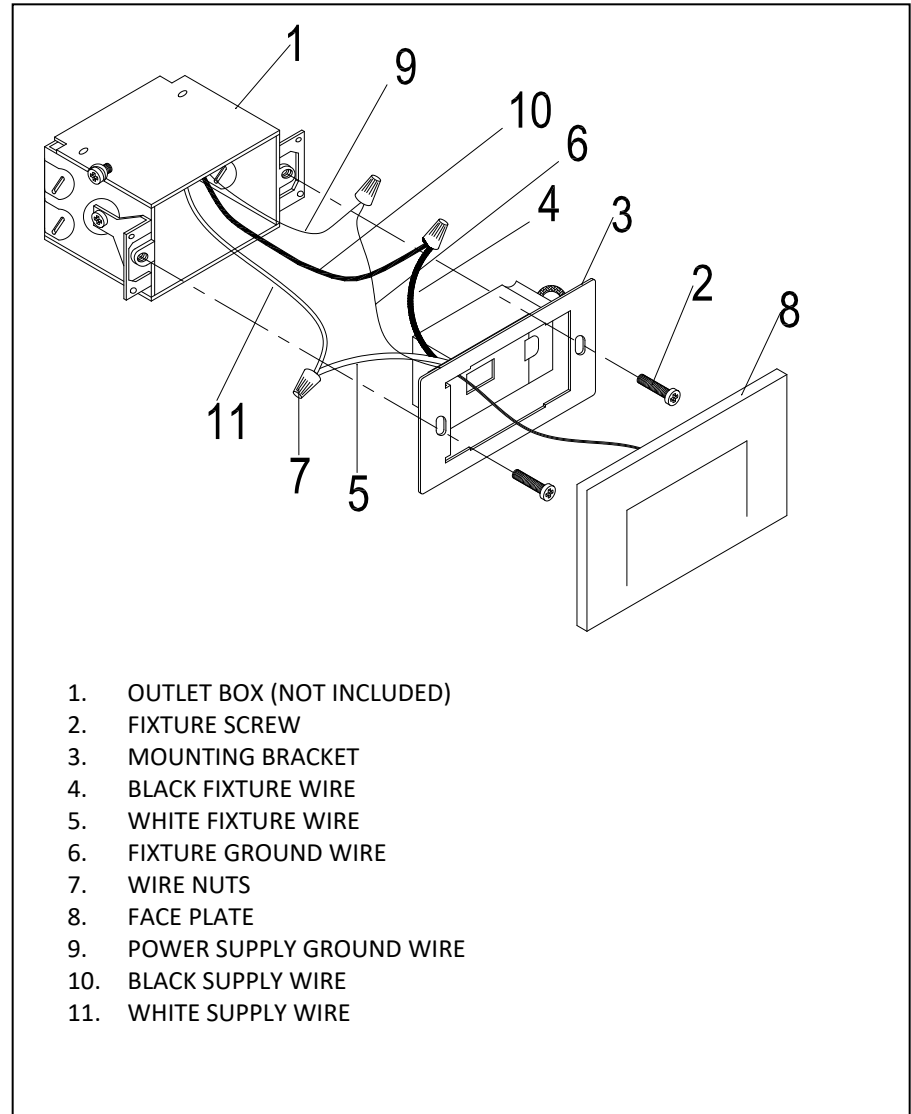
READ AND FOLLOW SAFETY INFORMATION

Turn off the main power at the circuit breaker before installing and servicing the fixture to prevent possible injury from electric shock.

All electrical connections must be in accordance with local and National Electrical Code (N.E.C.) standards. If you are unfamiliar with proper electrical wiring connections, obtain the services of a qualified electrician.

INSTALLATION & ASSEMBLY

1. Pull the power supply wires out from the OUTLET BOX (1) and mount the MOUNTING BRACKET (3) to the OUTLET BOX (1), using MOUNTING SCREWS (2).
2. Attach the power supply wires to the fixture lead wires by connecting BLACK to BLACK (10), WHITE to WHITE (11). Attach the POWER SUPPLY GROUND WIRE (9) from the OUTLET BOX and the FIXTURE GROUND WIRE (6) by using WIRE NUT(7).
3. After wires are connected, tuck them carefully inside the outlet box.
4. Place FACE PLATE (8) on fixture.



1. OUTLET BOX (NOT INCLUDED)
2. FIXTURE SCREW
3. MOUNTING BRACKET
4. BLACK FIXTURE WIRE
5. WHITE FIXTURE WIRE
6. FIXTURE GROUND WIRE
7. WIRE NUTS
8. FACE PLATE
9. POWER SUPPLY GROUND WIRE
10. BLACK SUPPLY WIRE
11. WHITE SUPPLY WIRE