

ALA2 Linear Series

LED Suspended Direct Indirect Linear Run Luminaire

Fixture Type:

Project Name:

Location:

Date:

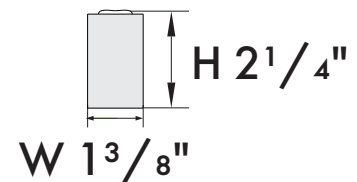
Features:

- 1 3/8" Wide advance architectural linear luminaire available in 2FT, 4FT and 8FT
- Direct/indirect lighting distribution
- 4 Lens options
- Various mounting option include suspended mount, wall mount and surface mount - see other spec sheet
- 120V continuous run up to 40FT and 277V up to 100FT



Product Performance Standard

Size	2FT/4FT/8FT	Power Factor	>0.9
Weight	3.75lb/6.1lb/12.5lb	Life Span	50,000 Hrs
Mounting	Suspended mount	Dimmable	1-10V Dimming
Color Temp	3000K/3500K/4000K	Efficacy	105lm/W
CRI	80	Warranty	5 Years
Input Voltage	120-277V	Ambient Operation Temperature	0C° (32°F) ~40C° (104°F)



Ordering Guide Example: ALA21D35KWH4FT

Fixture	Light Distribution	Lens	CCT	Finish	Linear Feet
ALA2 Direct / indirect	1 = 25%/75% (Default)	D = diffuser C = Conves L = Louver R = Reflector	30K = 3000K 35K = 3500K 40K = 4000K	WH = White BK = Black	Nominal linear feet = In increments of 2' fixture lengths com in 2' / 4' / 8' 120V continuous run up to 40 FT 277V continuous run up to 100 FT



ALA2 Linear Series

LED Suspended Direct Indirect Linear Run Luminaire

Fixture Type:

Project Name:

Location:

Date:

Ceiling Type

STEP 2 - Please specify the ceiling type

Dry Wall Ceiling - Example: AL-PDWR4, AL-NDWR2

Power feed	Canopy Shape	Finish	Canopy Size
------------	--------------	--------	-------------

AL-PDW			4
--------	--	--	---

Dry Wall Mount
Power feed side

R=Round
S=Square

WH=Blank
BK=Black

4 = 4 inch

Non - Power feed	Canopy Shape	Finish	Canopy Size
------------------	--------------	--------	-------------

AL-NDW			
--------	--	--	--

Dry Wall Mount
Non power feed side

R=Round
S=Square

WH=Blank
BK=Black

4 = 4 inch
2 = 2 inch

Notes:

Dry wall ceiling mounts will consist of:

Power feed side: AL-SP(RorS)4 = 4" Round or Square canopy, AL-DKC = J-box cross bar, AL-CABLE5FT = 5FT Power feed, AL-AC = Suspension Cable

Non power feed side: AL-SP(RorS)(2or4) = 4" or 2" Round or Square canopy, AL-AC=Suspension cable

Drop Ceiling - Example: AL-PTBR9F4, AL-NTBR9F2

Power feed	Canopy Shape	Grid Size	Grid Type	Finish	Canopy Size
------------	--------------	-----------	-----------	--------	-------------

AL-PTB					4
--------	--	--	--	--	---

Drop ceiling Mount
Power feed side

R=Round
S=Square

9 = 9/16
15 = 15/16

F = Flat
S = Slot

WH=Blank
BK=Black

4 = 4 inch

Non Power feed	Canopy Shape	Grid Size	Grid Type	Finish	Canopy Size
----------------	--------------	-----------	-----------	--------	-------------

AL-NTB					
--------	--	--	--	--	--

Drop ceiling Mount
Non Power feed side

R=Round
S=Square

9 = 9/16
15 = 15/16

F = Flat
S = Slot

WH=Blank
BK=Black

4 = 4 inch
2 = 2 inch

Drop ceiling mount will consist of:

Power feed side: AL-SP(RorS)4 = 4" Round or Square canopy, AL-PDKT = T bar power feed kit, AL-CABLE5FT = 5FT Power feed, AL-AC = Suspension Cable

Non Power feed side: AL-SP(RorS)(2or4) = 4" or 2" Round or Square canopy, AL-DKT = T bar non power feed kit, AL-AC=Suspension Cable

↓ Continue the ordering steps on the next page.



ALA2 Linear Series

LED Suspended Direct Indirect Linear Run Luminaire

Fixture Type:

Project Name:

Location:

Date:

Linear Run Connector

STEP - 3

Linear Run Connector

* ALA-FC

= Inline connector

* Each in-line connector can be connect two fixtures

120V continuous run up to 40 FT

277V continuous run up to 100 FT

Optionals

Emergency Battery Backup

EM = Emergency battery backup
(EMBK8WH-A-EXT02)

End of the ordering step

Performance Data:

Lens	Diffuser	Louver	Micro Reflector	Convex
Lengths	2ft , 4ft , 8ft	2ft , 4ft , 8ft	2ft , 4ft , 8ft	2ft , 4ft , 8ft
Wattage	2' 20W 4' 40W 8' 80W	2' 20W 4' 40W 8' 80W	2' 20W 4' 40W 8' 80W	2' 20W 4' 40W 8' 80W
Efficacy - 75%Down,25%Up	1100 lm/ft	1100 lm/W	1200 lm/W	1150 lm/W

ALA2 Linear Series

LED Suspended Direct Indirect Linear Run Luminaire

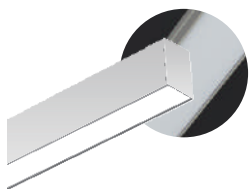
Fixture Type:

Project Name:

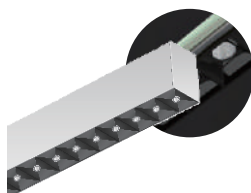
Location:

Date:

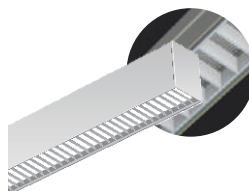
Lens:



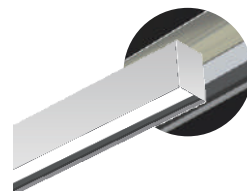
Diffuser
(-D)



Micro Reflector
(-R)

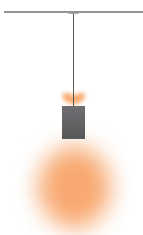


Louver
(-L)



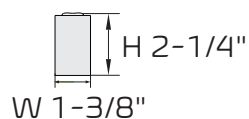
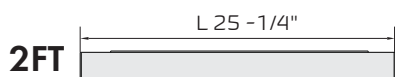
Convex Lens
(-C)

Lighting distributions options

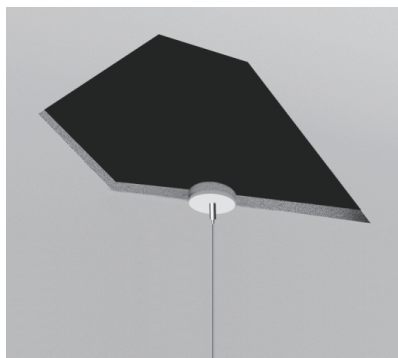


25% Up
75% Down

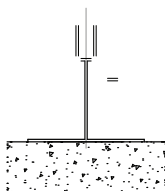
Dimensions:



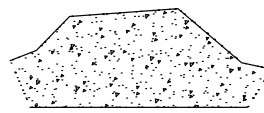
Ceiling Type:



Dry Wall Ceiling



Sheetrock

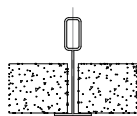


Various "Hard Ceilings"

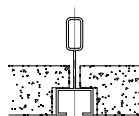
Drop Ceiling/Off Grid

Compatible for various T grid

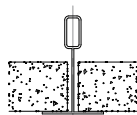
- 9/16" Flat
- 15/16" Flat
- 9/16" Slot
- 15/16" Slot



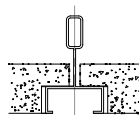
9/16" Flat Ceiling



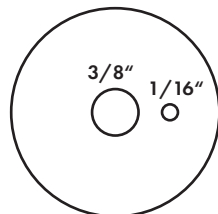
9/16" Step Ceiling



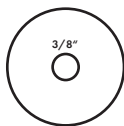
15/16" Flat Ceiling



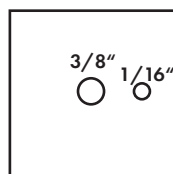
15/16" Step Ceiling



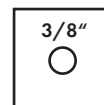
4" Power Feed
Round Canopy
(-AL-DWR4)



2" Non-Feed
Round Canopy
(-AL-DWR2)



4" Power Feed
Square Canopy
(-AL-DWS4)



2" Non-Feed
Square Canopy
(-AL-DWS2)

ALA2 Linear Series

LED Suspended Direct Indirect Linear Run Luminaire

Fixture Type:

Project Name:

Location:

Date:

Line Connection:

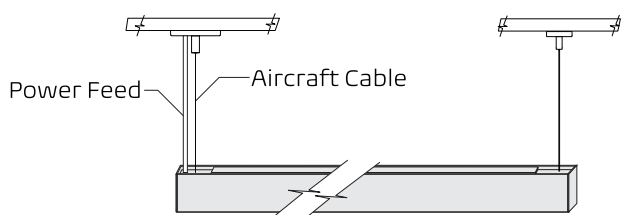


Linear Connector

(-AL-FC)

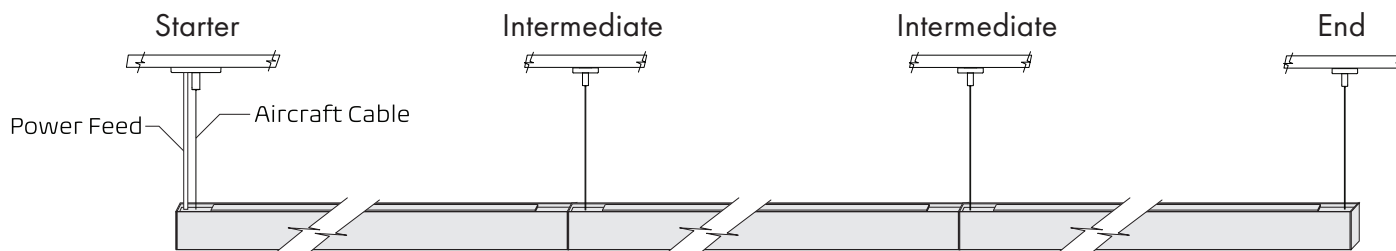
120Vac: Connections up to 40 ft

277Vac: Connections up to 100ft



Mounting point:
24.72" for 2FT fixture
49.8" for 4FT fixture
100.08" for 8FT fixture

Continuous Run



Mounting point:
24.72" for 2FT fixture
49.8" for 4FT fixture
100.08" for 8FT fixture

Mounting point:
25.08" for 2FT fixture
50.28" for 4FT fixture
100.44" for 8FT fixture

Mounting point:
24.96" for 2FT fixture
50.04" for 4FT fixture
100.2" for 8FT fixture