



# LEDACD SERIES

Architectural DOWNLIGHT





## The Original Commercial Retrofit Downlight In The U.S

A smart design that one LED engine fits all this product.

It has been upgraded 4th generation since 2013. The downlight system represents the culmination of engineering experience. We've made every engine to work seamlessly with the all trims, making it truly modular. What's more, it allows you to adapt to changing needs without renovations, putting you in complete control of your light. It is the ideal way to retrofit incandescent, CFL and HID to LED into existing recessed housing or frame-in kit.

It is designed and engineered for recessed applications, which is suitable for commercial and public places, such as shopping mall, hospital, airport, hotel lobby, etc.

### KEY FEATURES

- UL, CUL, Energy Star and Damp Rated
- CCT and wattage adjustable option
- 110-347V AC Input option
- Twist-Lock Modular design
- Trim sizes: 4", 6", 8", 10"
- New construction frame available
- 5 years limited warranty
- Quickship from USA

### NEW CONSTRUCTION AND RETROFIT:

Class A Office  
High-end Shops  
Contemporary Buildings  
Corridors  
Lobbies  
Hotel

## 8 Years Experiences Keep Innovation

CES downlights have been handling any lighting retrofit or new construction since 2013. And now, they have been upgraded to Gen 4 in 2020. We constantly review our existing product line and apply the most updated technologies to ensure product competitive advantage.



## Reliable -Trusted By Known Brands In North America

OKT is known for quality commercial LED downlights in North America. We made many projects all over in the United State, including office building, shopping mall, school, hospital, hotel, etc.



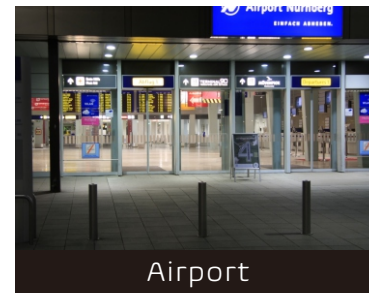
Location: New York Metro Station  
Time: 2014  
Product: LED Commercial Downlight  
Application: Retrofit



Office



Shopping Mall



Airport

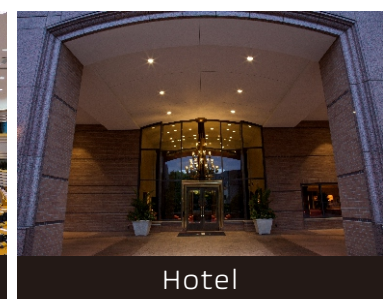


Auditorium

Location: Shopping Mall in North Carolina  
Time: 2014  
Product: LED Commercial Downlight  
Application: Retrofit



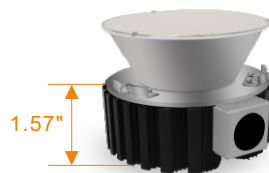
Leisure Hall



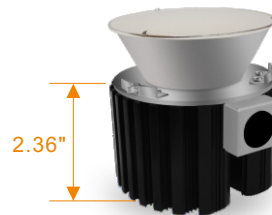
Hotel

# Twist And Lock Engine - Lower Stock Risk Allow Easy Modifications On Site

Light engine is mounted directly to aluminum trim providing superior thermal management to ensure long life. Spun aluminum reflector integrated with haze finish and white trim ring with shadow free. Deeply regressed diffusing lens conceals the LEDs from direct view.



18W IC / 27W IC / 40W NON-IC



40W IC / 54W NON-IC



80W NON-IC



4 inch



6 inch



8 inch



10 inch

## LED Driver

Isolated and class 2 output led driver that accommodates input voltages from 100-277 volts AC or 100-347 volts AC, dimmable with the use of most 0-10V dimmers.



# We deliver better light you can see, experience and benefit from.

We don't compromise on quality- so much so that all our commercial products are rigorously tested, often for years, to ensure the highest levels of performance and reliability.



Trim



Diffusing Cover



Connector



Conduit



LED Driver

## Excellent Heat-Sink

Light engine is mounted directly to aluminum trim providing superior thermal management to ensure long life.



## CCT & Wattage Adjustable

A adjustable slide switch comes standard with three adjustable wattage levels and three adjustable CCT, providing the flexibility to adapt to the changing needs of the space, setting, or environment.

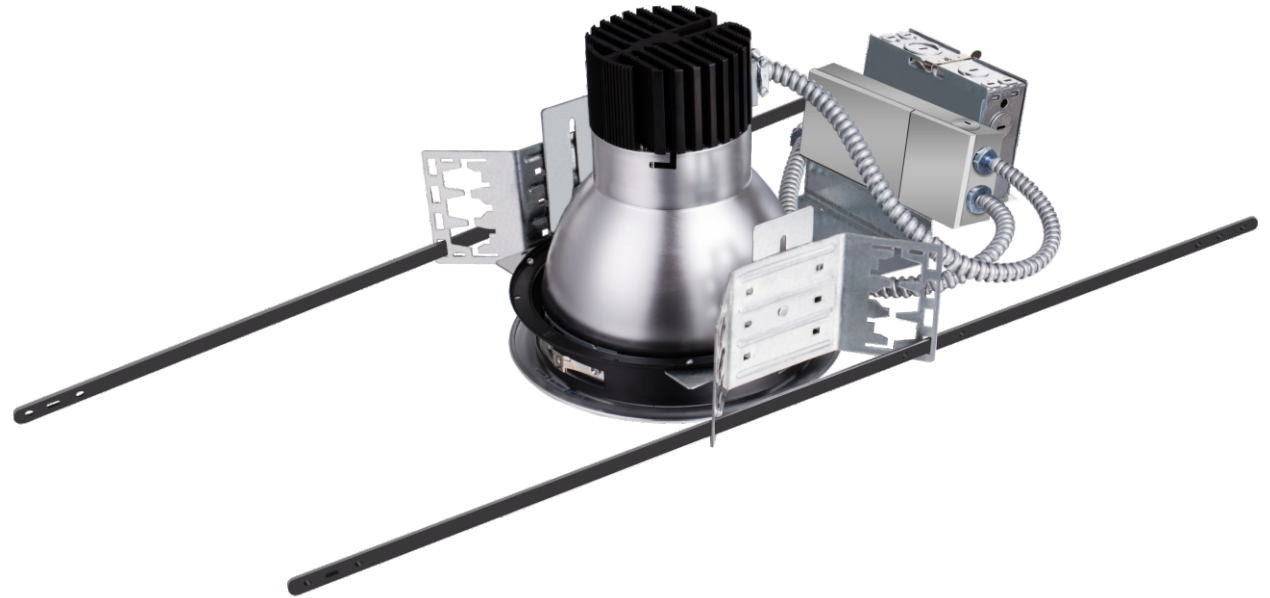


## Easy Installation

It is the ideal way to upgrade virtually any existing incandescent, CFL and HID commercial open frame rough-in section to high-performance LED illumination in a matter of minutes. It is provided with spring steel friction clips allowing for installation. Quick disconnection in j-box allows for easy wiring of retrofit conduit whip assembly without reflector interference.

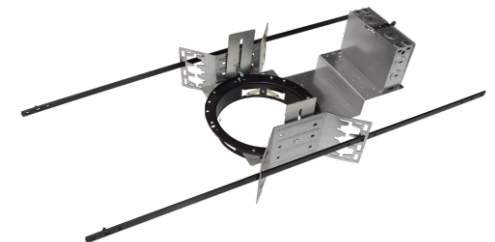


## An Ideal Match, CES Downlight + Frame Kits



### New Construction Frame Kits Option

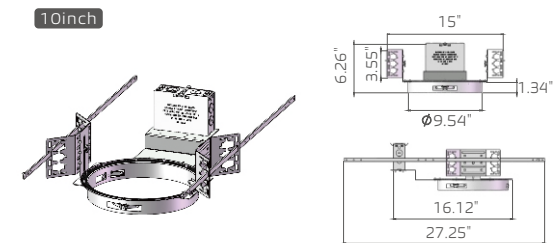
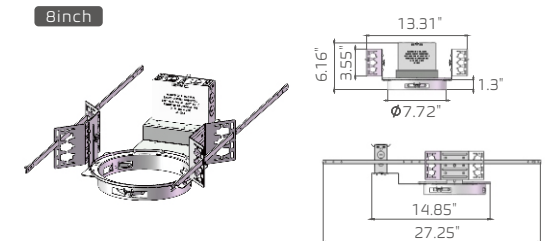
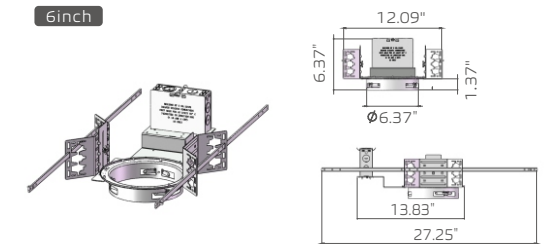
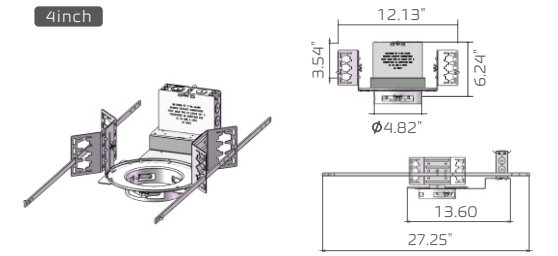
The frame kit was specifically designed for the CES series, it delivers the perfect aperture for a tight, seamless fit. This minimizes the space and materials required for installation. Steel housing frames are suitable for new construction. They are available in 4inch, 6inch, 8inch and 10inch.



# Specification

# Optional Housing

18 W	27 W	40 W	54 W	80 W
				
<b>Input Power</b>	<b>Input Power</b>	<b>Wattage Adjustable</b>	<b>Input Power</b>	<b>Wattage Adjustable</b>
18W	27W	18W, 27W, 40W	54W	50W, 65W, 80W
<b>Efficacy</b>	<b>Efficacy</b>	<b>Efficacy</b>	<b>Efficacy</b>	<b>Efficacy</b>
85LM/W	85LM/W	85LM/W	80LM/W	85LM/W
<b>CCT Adjustable</b>	<b>CCT Adjustable</b>	<b>CCT Adjustable</b>	<b>CCT</b>	<b>CCT</b>
3000K 3500K 4000K	3000K 3500K 4000K	3000K 3500K 4000K	3000K 3500K 4000K	3000K 3500K 4000K
<b>Trim Options</b>	<b>Trim Options</b>	<b>Trim Options</b>	<b>Trim Options</b>	<b>Trim Options</b>
6", 8", 10"	4", 6", 8", 10"	6", 8", 10"	6", 8", 10"	6", 8", 10"
<b>Type</b>	<b>Type</b>	<b>Type</b>	<b>Type</b>	<b>Type</b>
IC	IC	IC/NON-IC	NON-IC	NON-IC



# Luminous Intensity Distribution Diagram

