

Fixture Type:

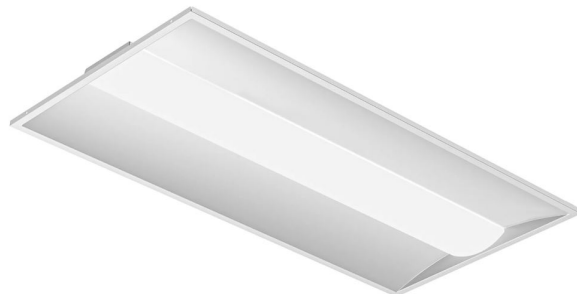
Project Name

Location:

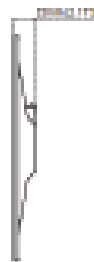
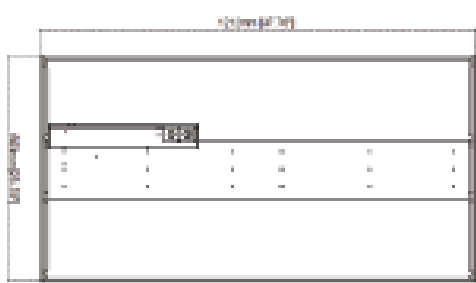
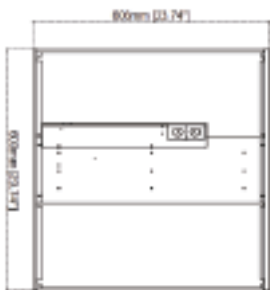
Date:

Features

- LED center basket troffer ensure more uniform light output and less shadows, making the interior feel larger and more open.
- 3CCT Color temperature adjustable 3500K/4000K/5000K
- Two different size and field wattage selectable
2'x2' 36W/30W/24W and 2'x4' 45W/36W/24W
- Durable cold rolled steel housing with matte white finish.
- Dimmable with compatible 0-10V dimmer.
- Optional microwave motion sensor, Bluetooth sensor and emergency battery backup.



Dimensions



23 4/5" X 23 4/5" X 2 1/8"

23 4/5" X 47 4/5" X 2 1/8"

Specification

Housing	Steel Housing	Efficacy	Up to 125 lm/W
Lens	Round acrylic lens	LED Life Span	50,000 Hrs
Beam Angle	120 Degree	Dimmable	0-10V Dimmable
Color Temp	3CCT 3500K/4000K/5000K	Lumen Package	3,000 lm to 5,625lm
CRI	80	Warranty	5 Years
Input Voltage	120-277V	Ambient Operation Temperature	-15°C (5°F) 40 °C(104°F)
Installation	T Bar recessed mount Flange mount Kit	Listing	UL Listed DLC Premium

Fixture Type:
Project Name
Location:
Date:


Ordering Guide **Example: LED2NTF-2x2DIM-UW35/40/50K**



Fixture Type	Size	Wattage	Color Temp.
LED2NTF	2x2DIM =2ft x 2ft 2x4DIM =2ft x 4ft	UW = Wattage Selectable 2x2 36W/30W/24W 2x4 45W/36W/24W	35/40/50K =3CCT Color temp adjustable

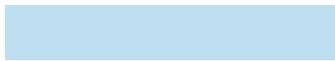
Optional accessories:

Emergency Battery Backup



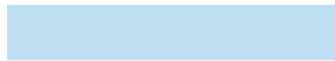
EM
(SKU:EMBK-TF-AC8W)
=8W Emergency battery backup
Factory pre-install by request.

Motion Sensor



MS01
(SKU:NTF-MSHD016VCR)
= Internal microwave motion sensor
factory pre-install.
BLMS01
(SKU:SILVAIR03)
=Bluetooth motion sensor factory pre-install, work with SILVAIR APP.

Flange Mount Kit



FMK
SKU:(PL2X2FM/PL2X4FM)
=Flange Mount kit for 2x2 and 2x4



LED2NTF Series

LED 2X2 2X4 TROFFER

Fixture Type:

Project Name

Location:

Date:

Product Information

LED2NTF2X2

2x2		3500K		4000K		5000K	
WATTAGE	LUMEN	EFFICACY	LUMEN	EFFICACY	LUMEN	EFFICACY	
36W	4428lm	123 lm/W	4500lm	125 lm/W	4500lm	125 lm/W	
30W	3690lm	123 lm/W	3750lm	125 lm/W	3750lm	125 lm/W	
24W	2928lm	123 lm/W	3000lm	125 lm/W	3000lm	125 lm/W	

LED2NTF2X4

2x4		3500K		4000K		5000K	
WATTAGE	LUMEN	EFFICACY	LUMEN	EFFICACY	LUMEN	EFFICACY	
45W	5535lm	123 lm/W	5625lm	125 lm/W	5625lm	125 lm/W	
36W	4428lm	123 lm/W	4500lm	125 lm/W	4500lm	125 lm/W	
24W	2928lm	123 lm/W	3000lm	125 lm/W	3000lm	125 lm/W	

Fixture Type:

Project Name

Location:

Date:

Optional Accessories

Emergency Battery Backup:



8W Internal Emergency Battery Backup

SKU: EMBK-TF-AC8W

- Internal battery backup is pre-install by request.
- 90 minutes emergency operation
- 8W provide up to 1,000 lumen during emergency mode

Motion Sensor:



Internal Microwave Motion Sensor

SKU: NTF-MSHD016VCR

- Internal microwave motion sensor is pre-install by request.

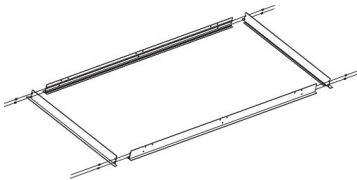


Bluetooth Internal Microwave Motion Sensor

SKU: SILVAIR03

- Internal microwave motion sensor is pre-install by request.
- Bluetooth control work with Silvair app on IOS and Android.

Flange Mount:



Flange Mount Kit

SKU: PL2X2FM, PL2X4FM

- 2X2 or 2x4 flange mount kit.