**WARNING****PLEASE READ ALL INSTRUCTIONS BEFORE ATTEMPTING INSTALLATION**

To avoid electric shock or component damage disconnect power before attempting installation or servicing.

This product must be installed in accordance with the national electric code (NEC) and all applicable federal, state and local

Disconnect product and allow cooling prior to servicing.

Any alteration or modification of this product is expressly forbidden as it may cause serious personal injury, death, property damage and/or product malfunction.

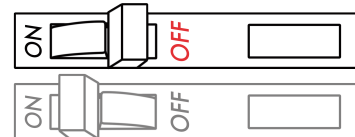
To prevent product malfunction and/or electrical shock this product must be properly grounded.

This luminaire is designed to operate in ambient temperatures ranging from -40°C to 40°C and to be horizontally mounted with th

This product is not available for several special environments, such as places with corrosive gas liquids or high pressure water vapor

SHOCK HAZARD!

To avoid electric shock or component damage disconnect power before attempting installation or servicing.

**TOOLS REQUIRED**

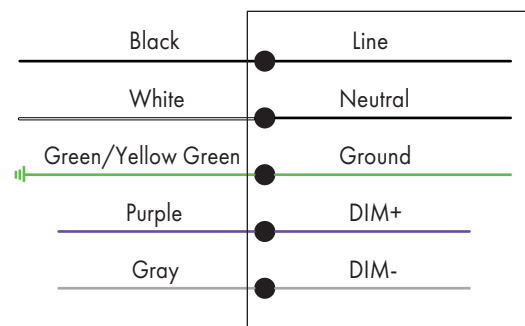
Tools:

1. Sharp Side Cutter
2. Electric Drill
3. Level
4. Measuring Tool
5. Wire Stripper / Knife
6. Philips Screwdrivers
7. Wire Cutters

WIRING

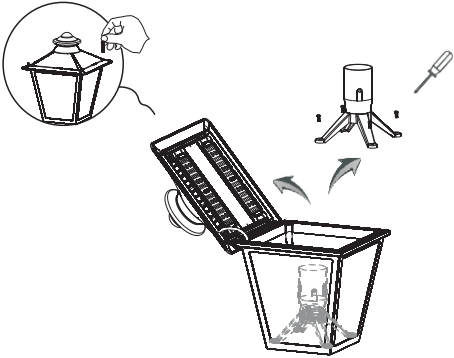
CORD/ SUOOLY WIRING

LUMINAIRE

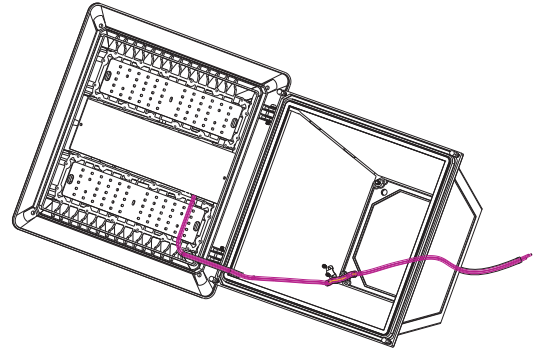


Installation Guide

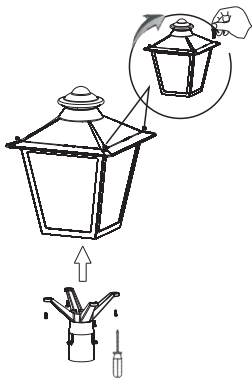
1. Remove the two fixing studs of the cover with tool, open the it and take out the internal fixing screws and bracket.



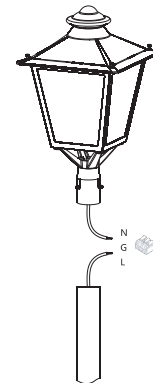
2. After removing the bracket, fix the power wire with a wire clamp, and fix the wire clamp with screws.



3. Install the bracket to the housing, and lock the bracket with the fixing screws removed in the first step.



4. Connect the input wire to the pole, and connect the reserved wire with the terminal.



5. Install the fixture into the pole and use a hexagon wrench to tighten the three fixing screws.

