

## WARNING

### PLEASE READ ALL INSTRUCTIONS BEFORE ATTEMPTING INSTALLATION

To avoid electric shock or component damage disconnect power before attempting installation or servicing.

This product must be installed in accordance with the national electric code (NEC) and all applicable federal, state and local

Disconnect product and allow cooling prior to servicing.

Any alteration or modification of this product is expressly forbidden as it may cause serious personal injury, death, property damage and/or product malfunction.

To prevent product malfunction and/or electrical shock this product must be properly grounded.

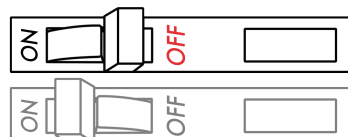
This luminaire is designed to operate in ambient temperatures ranging from -40°C to 40°C and to be horizontally mounted with th

This product is not available for several special environments, such as places with corrosive gas liquids or high pressure water vapor

## SHOCK HAZARD!



To avoid electric shock or component damage disconnect power before attempting installation or servicing.



## TOOLS REQUIRED

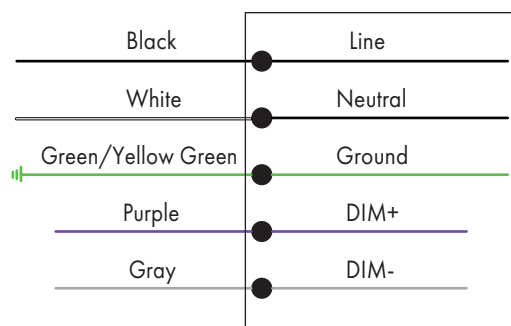
Tools:

1. Sharp Side Cutter
2. Electric Drill
3. Level
4. Measuring Tool
5. Wire Stripper / Knife
6. Philips Screwdrivers
7. Wire Cutters

## WIRING

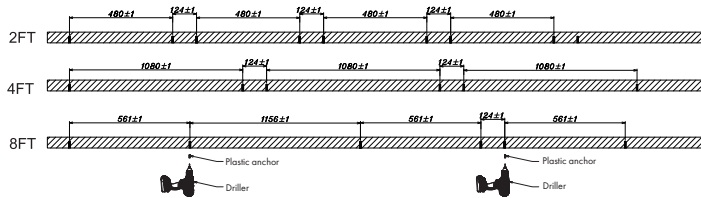
CORD/ SUOOLY WIRING

LUMINAIRE

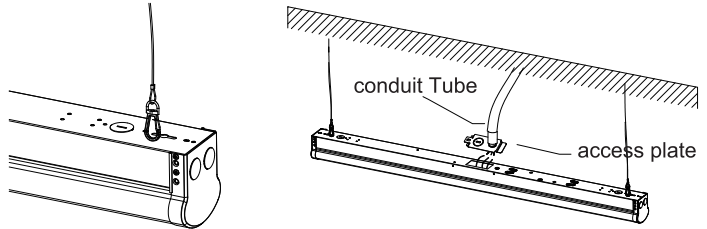


# Installation Guide

1. Dig the mounting holes in the ceiling as the picture shows, install the plastic anchor to the holes.



2. Install the fastening head 1 with tapping screw and then install the fastening head 2 to the fastening head 1.
3. Hook one end of the chain or suspend rope on the fixture.
4. Hang the other end of the chain on the hook that fixed on ceiling.
5. Remove the metal cover of access plate and fix the conduit Tube on the access plate.
6. Wiring correctly as the picture shows.



7. Connect the AC wire and dimmable wire of two fixtures, and locate back into the fixture.
8. Lift LED Strip 1 firstly and then lift up LED Strip 2's one side with flexible cable mouting bracket with PB3\*6 screw.
9. Connect the LED Strip as the above method (max. 7pcs).

