

Fixture Type:

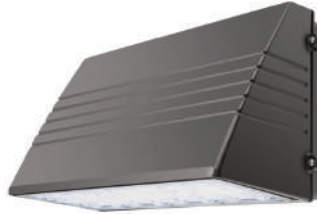
Project Name:

Location:

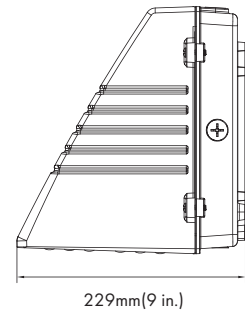
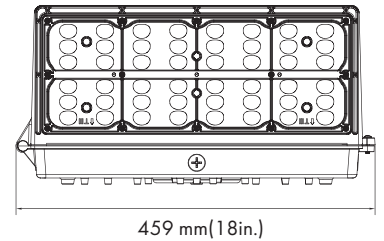
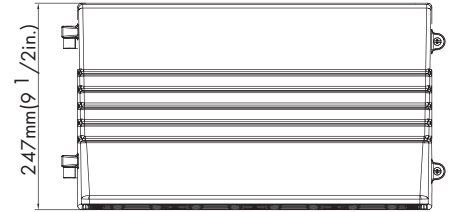
Date:

Features

- Rugged die cast aluminum housing
- Dark bronze powder coat finish
- Polycarbonate optical lens with UV stabilizer
- Full cutoff with zero uplight and low glare at angles
- J box or surface mounting
- Compatible with photocell, emergency battery



Dimension



Product Performance Standard

Size	18" L X 9 1/2" W X 9" H	Power Factor	90%
Weight	10 lb	LED Lifespan	50,000 Hrs
IP Rate	IP65	Dimmable	Non Dimmable
Color Temp	4000K-5000K	DLC	YES
CRI	70	Warranty	10 Years
Input Voltage	120-277V / 347-480V	Ambient Operation Temperature	-40C° (-40°F) ~45C° (113°F)

Ordering Guide Example: LEDLFCUWP 90W 40K

Fixture Type	Wattage	Color Temp.	Voltage	Finish	² Optional Accessories
LEDLFCUWP	90 W	40K=4000K 50K=5000K	Blank = 120-277V	Standard finish: Blank = Dark Bronze ¹ Premium finish: BK = Black WH = White	Blank = No Accessories PC = Photocell (-WPPC) ³ EM = Emergency Battery Backup (-EMBK8WH-A-INT01)

Note: 1.Premium finish incur on additional cost, contact factory for MOQ and availability.
2.Photocell and emergency battery is not available for high voltage fixture.

Fixture Type:

Project Name:

Location:

Date:

Product Information

4000K			5000K	
WATTAGE	LUMEN	EFFICACY	LUMEN	EFFICACY
90W	12200lm	136lm/W	12300lm	137lm/W

Optional Accessories



Internal Photocell

-SKU: WPPC

-Internal photocell is field installed or pre-installed by request.



Internal Emergency Battery Backup

-SKU: EMBK8WH-A-INT01

-Internal battery backup is field installed or pre-installed by request.

-Delivery 1000 lumen for 90min emergency use

Only suitable for 90W

For the accessories detail, please visit www.lironlighting.com/products/add-on-accessories

Fixture Type:

Project Name:

Location:

Date:

Installation Guide

1. Junction box Mounting

1. Loosen screws and remove the front case set carefully from the back plate.
(Angle between front case and back plate varies from 0 degree to 45 degree.
Push up to take down the front case.)
2. Remove 1/2" plug in center (B) for wiring, the fixture supports standard 3 1/4" and 4" Junction box.
3. Attach the back plate on the wall, use the supplied gaskets for a weather tight seal.
4. Finish wiring (Black for Line, White for Neutral and Yellow Green for Ground).
5. Replace the lens set on the hinges, make connections and close the lens set then tighten the screws.

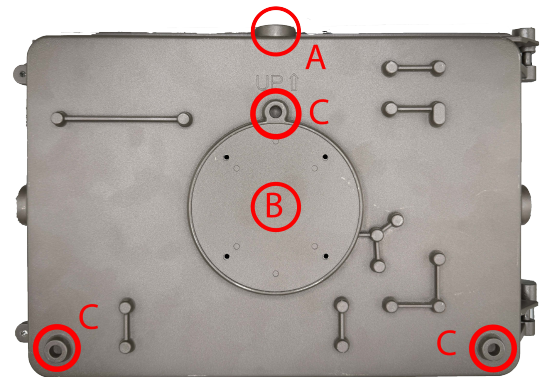
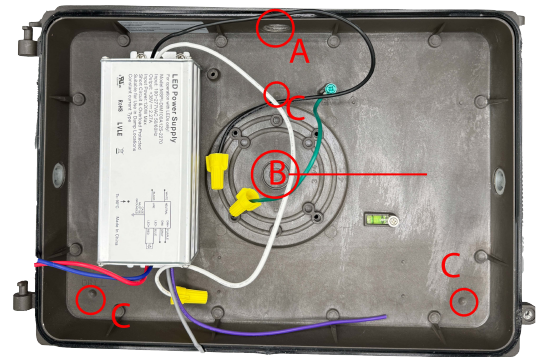
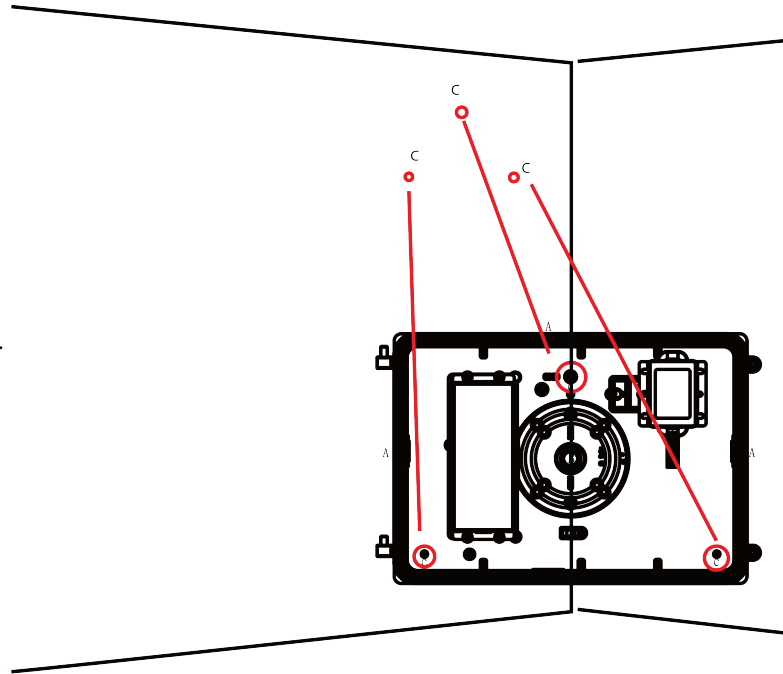
2. Conduit Mounting

1. Loosen screws and remove the front case set carefully from the back plate.
(Angle between front case and back plate varies from 0 degree to 45 degree.
Push up to take down the front case.)
2. Remove 1/2" plug from where you intend to feed conduit .
3. Drilling out the holes (C) to secure it on the wall with choosing proper screws.
4. Finish wiring (Black for line, white for Neutral and Yellow-Green for Ground).
5. Replace the lens set on the hinges, make connections and close the lens set then tighten the screws.

3. Outdoor Flush Mounting

1. Loosen screws and remove the front lens set carefully from the back plate.
2. B Hole 1/2" dia. Screw the hole where you intend to connect the wire from the wall.
3. Drilling out the holes (C) to secure it on the wall by choosing the proper screws.
4. Finish wiring (Black for line, white for Neutral and Yellow-Green for Ground)
5. Replace the lens set on the hinges, make connections and close the lens set then tighten the screws.

Note: To ensure waterproofing seal, apply weatherproof silicone sealant around the edge of the wall mounting box and junction box. This is especially important with an uneven wall surface. Silicone all plugs and unused conduit entries

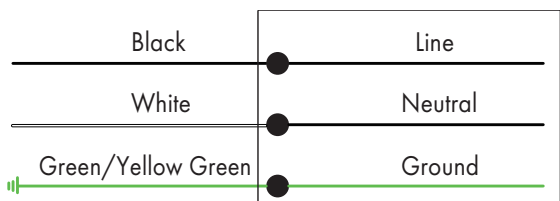


Fixture Type:
Project Name:
Location:
Date:

Wiring Diagram

CORD/ SUPPLY WIRING

LUMINAIRE



Scan the QR code or visit www.lironlighting.com/products/ledlfcuwp for the complete luminaire installation guide.

Note:
