

**Fixture Type:**

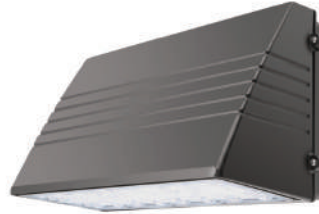
**Project Name:**

**Location:**

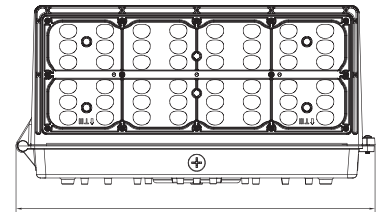
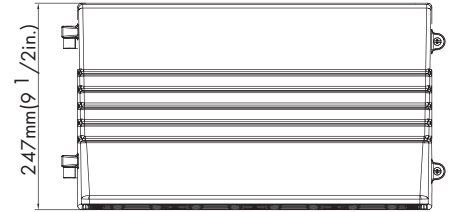
**Date:**

## Features

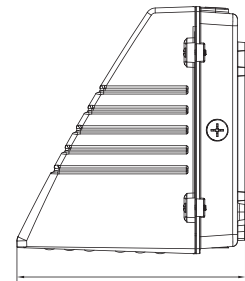
- Rugged die cast aluminum housing
- Dark bronze powder coat finish
- Polycarbonate optical lens with UV stabilizer
- Full cutoff with zero uplight and low glare at angles
- J box or surface mounting
- Compatible with photocell, emergency battery



## Dimension



459 mm (18 in.)



229mm(9 in.)



## Product Performance Standard

<b>Size</b>	18" L X 9 1/2" W X 9" H	<b>Power Factor</b>	90%
<b>Weight</b>	10 lb	<b>LED Lifespan</b>	50,000 Hrs
<b>IP Rate</b>	IP65	<b>Dimmable</b>	Non Dimmable
<b>Color Temp</b>	4000K-5000K	<b>DLC</b>	YES
<b>CRI</b>	70	<b>Warranty</b>	5 Years
<b>Input Voltage</b>	120-277V / 347-480V	<b>Ambient Operation Temperature</b>	-40C° (-40°F) ~45C° (113°F)

## Ordering Guide

Example: LEDLFCUWP 90W 40K

Fixture Type	Wattage	Color Temp.	Voltage	Finish	<sup>2</sup> Optional Accessories
LEDLFCUWP	90 W 135W	40K=4000K 50K=5000K	Blank = 120-277V HV = 347 -480V	Standard finish: Blank = Dark Bronze <sup>1</sup> Premium finish: BK = Black WH = White	Blank = No Accessories PC = Photocell (-WPPC) <sup>3</sup> EM = Emergency Battery Backup (-A-EMBK8WLW-INT)

Note: 1.Premium finish incur on additional cost, contact factory for MOQ and availability.  
2.Photocell and emergency battery is not available for low voltage fixture  
3.Emergency battery option is not available for 135W

**Fixture Type:**

**Project Name:**

**Location:**

**Date:**

## Product Information

4000K			5000K	
WATTAGE	LUMEN	EFFICACY	LUMEN	EFFICACY
90W	12200lm	136lm/W	12300lm	137lm/W
135W	18000lm	133lm/W	18000lm	133lm/W

## Optional Accessories



### Internal Photocell

- SKU: WPPC
- Internal photocell is field installed or pre-installed by request.



### Internal Emergency Battery Backup

- SKU: A-EMBK8WLV-INT
- Internal battery backup is field installed or pre-installed by request.
- Delivery 1000 lumen for 90min emergency use
- Only suitable for 90W

For the accessories detail, please visit [www.lironlighting.com/products/add-on-accessories](http://www.lironlighting.com/products/add-on-accessories)

**Fixture Type:**

**Project Name:**

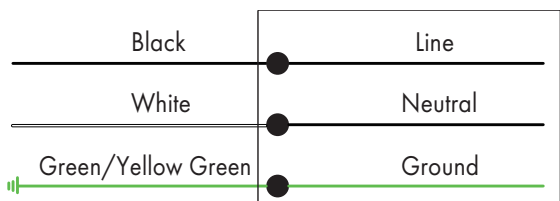
**Location:**

**Date:**

## Wiring Diagram

CORD/ SUPPLY WIRING

LUMINAIRE



Scan the QR code or visit [www.lironlighting.com/products/ledlfcuwp](http://www.lironlighting.com/products/ledlfcuwp) for the complete luminaire installation guide.

Note:

---

---

---

---

---

---

---

---

---

---