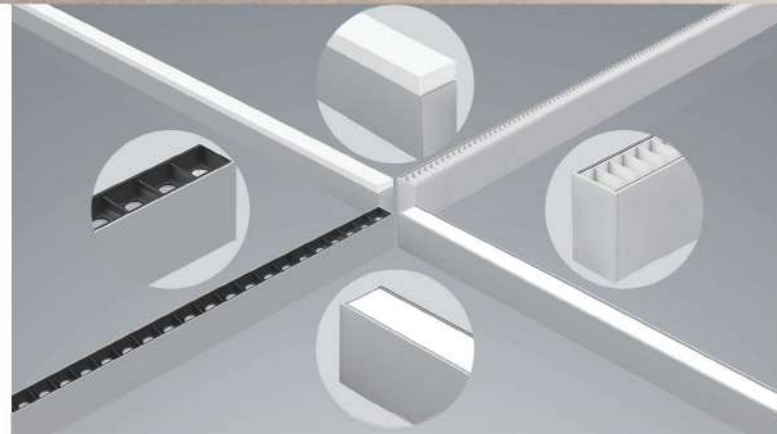
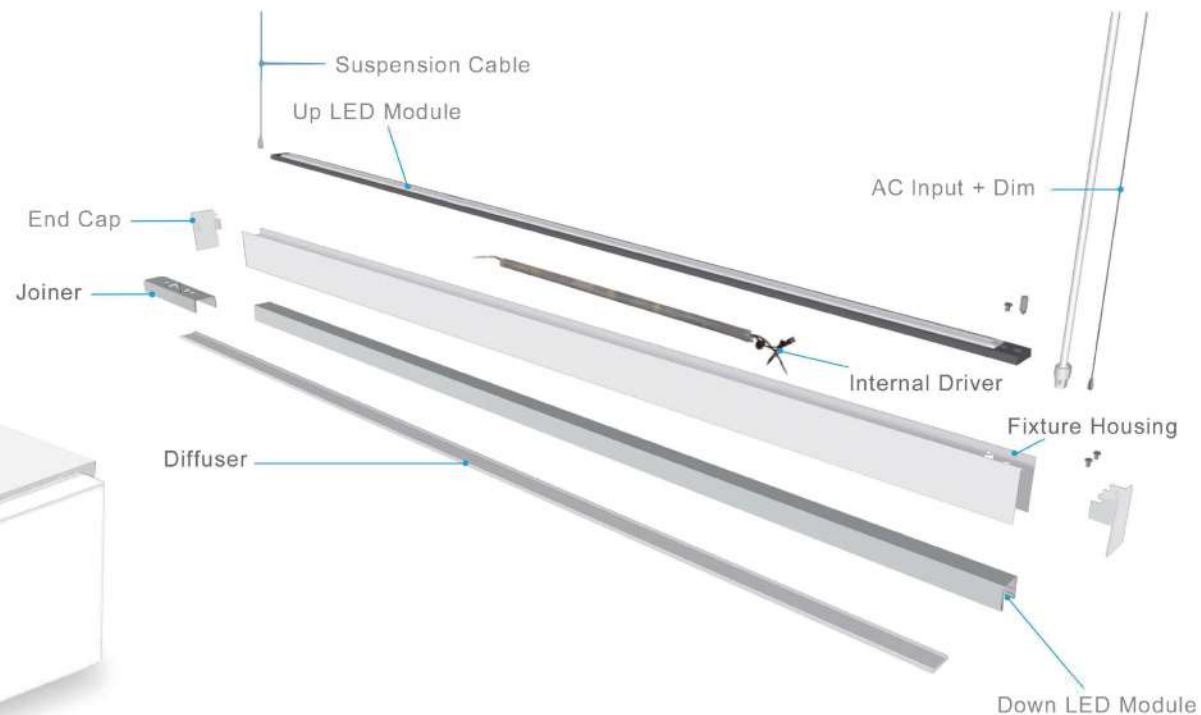


Innovative & Elegance

Liron Alpha series is a unique linear series that brings any space to the center stage. These timeless, streamline forms blend well with contemporary decors and modern workplaces. These Linear luminaries simply provide wide, powerful lighting to any atmosphere.







Simple and Sophisticated

Built on the core of its modern, practical design philosophy, the Alpha Series allows easy access to critical components to simplify installation or in the event that repair or replacement becomes necessary.



PENDANT MOUNT



Color Temperature



30K
35K
40K



Widths
1 3/8 Inch



Lengths
2 FT
4 FT
8 FT

Lumen Outputs



Up to 1200lm/ft
Up to 120lm/W

Fixture Distribution



Direct
Indirect

Uplight Distribution



100%
75%
50%
25%

Wattage
20W
40W
80W

Downlight Distribution



100%
75%
50%
25%

Voltage
100-277V

Downlight Diffuser



Diffuser
Louver
Reflector
Convex



Matte White
Carbon Black



Diffuser (110°)



Louver (80°)



Convex (110°)



Micro Reflector(80°)
UGR<15



SURFACE MOUNT



Widths
1 3/8 Inch

Lengths
2 FT
4 FT
8 FT

Color Temperature



30K
35K
40K



Up to 1200lm/ft
Up to 120lm/W

Downlight Distribution



100%
75%
50%
25%

Downlight Diffuser



Diffuser
Louver
Reflector
Convex



Matte White
Carbon Black

Wattage

20W
40W
80W

Voltage

100-277V



Diffuser (110°)



Louver (80°)



Convex (110°)



Micro Reflector(60°)
UGR<15



WALL MOUNT



Widths
1 3/8 Inch



Lengths
2 FT
4 FT
8 FT

Fixture Distribution



Direct
Direct/Indirect

Uplight Distribution



100%
75%
50%
25%

Downlight Distribution



100%
75%
50%
25%

Downlight Diffuser



Diffuser
Louver
Reflector
Convex



Matte White
Carbon Black

Color Temperature



30K
35K
40K

Lumen Outputs



Up to 1200lm/ft
Up to 120lm/W

Wattage

20W
40W
80W

Voltage

100-277V



Diffuser (110°)



Louver (80°)



Convex (110°)



Micro Reflector(60°)
UGR<15



CORNERS & PATTERNS



'X' Pattern



'T' Pattern



'Y' Pattern



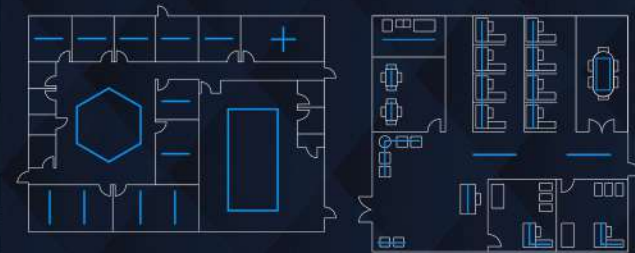
'L' Pattern



'I' Pattern



'V' Pattern





Model	Alpha - Diffuser	Alpha - Louver	Alpha - Micro Reflector	Alpha - Convex
1.3" Wide	✓	✓	✓	✓
Lengths	2FT, 4FT, 8FT	2FT, 4FT, 8FT	2FT, 4FT, 8FT	2FT, 4FT, 8FT
Wattage	20W/40W/80W	20W/40W/80W	20W/40W/80W	20W/40W/80W
Efficacy	105lm/W, 1050lm/FT	75lm/W, 750lm/FT	120lm/W, 1200lm/FT	110lm/W, 1100lm/FT
Beam angle	Up 150° Down 100°	Up 150° Down 60°	Up 150° Down 48°	Up 150° Down 110°
CCT	2700K/3000K/3500K/4000K/5000K	2700K/3000K/3500K/4000K/5000K	2700K/3000K/3500K/4000K/5000K	2700K/3000K/3500K/4000K/5000K
CRI	>80	>80	>80	>80
Color	White, Black, Custom Color Available	White, Black, Custom Color Available	White, Black, Custom Color Available	White, Black, Custom Color Available
100-277V Input Internal Driver	✓	✓	✓	✓
Wattage Selectable Option(100%, 75%, 50%)	✓	✓	✓	✓
1-10V Dimming	✓	✓	✓	✓
Custom Pattern	✓	✓	✓	✓
Pendant	✓	✓	✓	✓
Surface Mounted	✓ (2ft , 4ft)	✓ (2ft , 4ft)	✓ (2ft , 4ft)	✓ (2ft , 4ft)
Wall Mounted	✓ (2ft , 4ft)	✓ (2ft , 4ft)	✓ (2ft , 4ft)	✓ (2ft , 4ft)
Warranty	5 year	5 year	5 year	5 year
UL	✓	✓	✓	✓

Application Flexibility

T-grid Or Dry Ceiling Compatible

Canopy Style



1.6 in. round



4.5 in. round



1.6 in. square



4.5 in. square

Drop Ceiling / T-Grid Ceiling



T - Grid Hanger option

Ext. driver w/ hanger
Additional building code compliant
1.6 in. 4.5 in. round/square available
EM / Occ. sensor compatible