



## ALA1 Architectural Linear Series

LED Surface Mount Direct Linear Run Luminaire

**Fixture Type:**

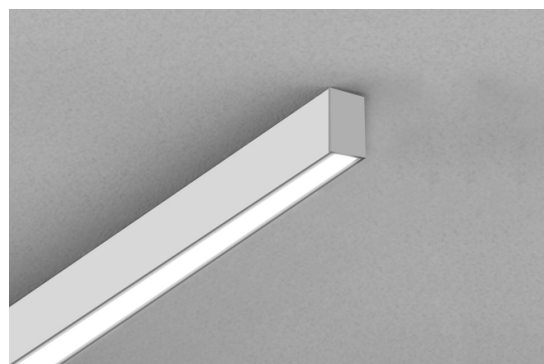
**Project Name:**

**Location:**

**Date:**

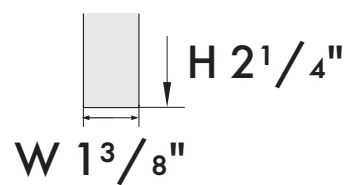
### Features:

- 1 3/8" wide advance architectural linear luminaire available in 2FT/4FT/8FT
- Direct lighting distribution
- 4 Lens option
- Various mounting option include suspended mount, wall mount and surface mount - see other spec sheet
- 120V continuous run up to 40FT and 277V up to 100FT



### Product Performance Standard

<b>Size</b>	2FT/4FT/8FT	<b>Power Factor</b>	>0.9
<b>Weight</b>	3.75lb/6.1lb/12.5lb	<b>Life Span</b>	50,000 Hrs
<b>Mounting</b>	Surface Mount	<b>Dimmable</b>	1-10V Dimming
<b>Color Temp</b>	3000K/3500K/4000K	<b>Efficacy</b>	105lm/W
<b>CRI</b>	80	<b>Warranty</b>	5 Years
<b>Input Voltage</b>	120-277V	<b>Ambient Operation Temperature</b>	0C° (32°F) ~40C° (104°F)



### Ordering Guide - (Linear Surface Mount direct linear run luminaire)

#### STEP 1

Fixture	Lens	CCT	Finish	Linear Feet
ALA1 Down light Version	D = diffuser C = Conves L = Louver R = Reflector	30K = 3000K 35K = 3500K 40K = 4000K	WH = White BK = Black	Nominal linear feet = In increments of 2' fixture lengths com in 2'/4'/8' 120V continuous run up to 40 FT 277V continuous run up to 100 FT

↓ Continue the ordering steps on the next page.

Last revised: 2-2-2022

Page 1



10835 S Wilcrest Dr, Ste C Houston TX 77099 | Customer Service : 833-875-4766 | Email : Sales@lironlighting.com

Due to continuous product improvements, specifications and dimensions are subject to change without notice. Certain options have limited compatibility with some other product selections. Consult www.lironlighting.com for most current technical information.



## ALA1 Architectural Linear Series

LED Surface Mount Direct Linear Run Luminaire

**Fixture Type:**

Project Name:

Location:

Date:

### Surface Mount Kit

#### STEP - 2

##### Mounting



AL-S2/4/8

= Surface Mount Kit for 2/4/8 FT fixture

### Linear Run Connector

#### STEP - 3

##### Linear Run Connector



\* ALA-FC

= Inline connector



\* Each in-line connector can be connect two fixtures

120V continuous run up to 40 FT

277V continuous run up to 100 FT

### Optional

#### Emergency Battery Backup



EM = Emergency battery backup  
(EMBK8WH-A-EXT02)

#### Diffuser Lens Roll



LR42 = 42' diffuser lens roll



# ALA1 Architectural Linear Series

LED Surface Mount Direct Linear Run Luminaire

**Fixture Type:**

**Project Name:**

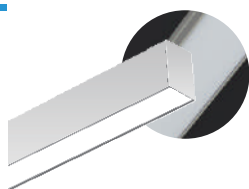
**Location:**

**Date:**

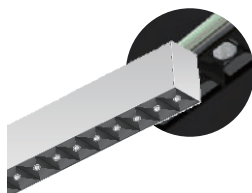
## Performance Data:

Lens	Diffuser	Louver	Micro Reflector	Convex
<b>Lengths</b>	2ft , 4ft , 8ft	2ft , 4ft , 8ft	2ft , 4ft , 8ft	2ft , 4ft , 8ft
<b>Wattage</b>	20W/40W/80W	20W/40W/80W	20W/40W/80W	20W/40W/80W
<b>Efficacy</b>	75 lm/W	67 lm/W	100 lm/W	90 lm/W
<b>Beam Angle</b>	Down 100°	Down 60°	Down 48°	Down 110°

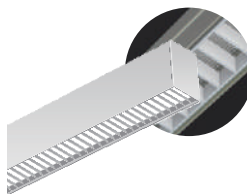
## Lens:



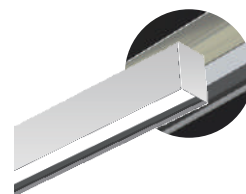
Diffuser  
(-D)



Micro Reflector  
(-R)

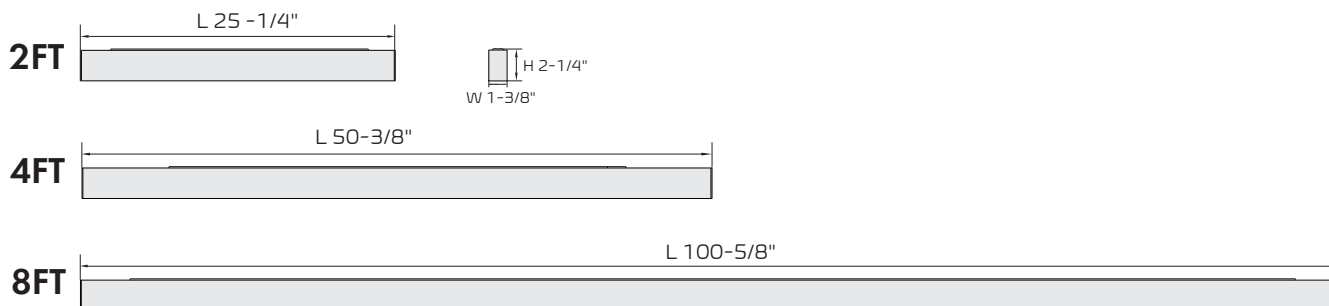


Louver  
(-L)



Convex Lens  
(-C)

## Dimensions:



## ALA1 Architectural Linear Series

LED Surface Mount Direct Linear Run Luminaire

**Fixture Type:**

Project Name:

Location:

Date:

### Line Connection:



### Linear Connector

(-ALA-FC)

**120Vac: Connections up to 40 ft**

**277Vac: Connections up to 100ft**

