



ALA1 Architectural Linear Series

LED Suspended Direct Linear Run Luminaire

Fixture Type:

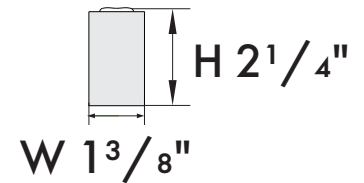
Project Name:

Location:

Date:

Features:

- 1 3/8" Wide advance architectural linear luminaire available in 2FT, 4FT and 8FT
- Direct lighting distribution
- 4 Lens options
- Various mounting option include suspended mount, wall mount and surface mount - see other spec sheet
- 120V continuous run up to 40FT and 277V up to 100FT



Product Performance Standard

Size	2FT/4FT/8FT	Power Factor	>0.9
Weight	3.75lb/6.1lb/12.5lb	Life Span	50,000 Hrs
Mounting	Pendant	Dimmable	1-10V Dimming
Color Temp	3000K/3500K/4000K	Efficacy	105lm/W
CRI	80	Warranty	5 Years
Input Voltage	120-277V	Ambient Operation Temperature	0C° (32°F) ~40C° (104°F)

Ordering Guide - (Linear Pandent direct linear run luminaire)

STEP 1

Fixture	Lens	CCT	Finish	Linear Feet
ALA1 Down light Version	D = diffuser C = Conves L = Louver R = Reflector	30K = 3000K 35K = 3500K 40K = 4000K	WH = White BK = Black	Nominal linear feet = In increments of 2' fixture lengths com in 2'/4'/8' 120V continuous run up to 40 FT 277V continuous run up to 100 FT

↓ Continue the ordering steps on the next page.

Last Revised: 1/31/2022

Page 1



10835 S Wilcrest Dr, Ste C Houston TX 77099 | Customer Service : 833-875-4766 | Email : Sales@lironlighting.com

Due to continuous product improvements, specifications and dimensions are subject to change without notice. Certain options have limited compatibility with some other product selections. Consult www.lironlighting.com for most current technical information.



ALA1 Architectural Linear Series

LED Pendant Direct Linear Run Luminaire

Fixture Type:

Project Name:

Location:

Date:

Ceiling Type

STEP 2 - Please specify the ceiling type

Dry Wall Ceiling - Example: AL-PDWR4, AL-NDWR2

Power feed	Canopy Shape	Finish	Canopy Size
AL-PDW			4
Dry Wall Mount Power feed side	R=Round S=Square	WH=Blank BK=Black	4 = 4 inch

Non - Power feed Canopy Shape Finish Canopy Size

AL-NDW			
Dry Wall Mount Non power feed side	R=Round S=Square	WH=Blank BK=Black	4 = 4 inch 2 = 2 inch

Notes:

Dry wall ceiling mounts will consist of:

Power feed side: AL-SP(RorS)4 = 4" Round or Square canopy, AL-DKC = J-box cross bar, AL-CABLE5FT = 5FT Power feed, AL-AC = Suspension Cable

Non power feed side: AL-SP(RorS)(2or4) = 4" or 2" Round or Square canopy, AL-AC = Suspension cable

Drop Ceiling - Example: AL-PTBR9F4, AL-NTBR9F2

Power feed	Canopy Shape	Grid Size	Grid Type	Finish	Canopy Size
AL-PTB					4
Drop ceiling Mount Power feed side	R=Round S=Square	9 = 9/16 15 = 15/16	F = Flat S = Slot	WH=Blank BK=Black	4 = 4 inch

Non Power feed Canopy Shape Grid Size Grid Type Finish Canopy Size

AL-NTB					
Drop ceiling Mount Non Power feed side	R=Round S=Square	9 = 9/16 15 = 15/16	F = Flat S = Slot	WH=Blank BK=Black	4 = 4 inch 2 = 2 inch

Drop ceiling mount will consist of:

Power feed side: AL-SP(RorS)4 = 4" Round or Square canopy, AL-PDKT = T bar power feed kit, AL-CABLE5FT = 5FT Power feed, AL-AC = Suspension Cable

Non Power feed side: AL-SP(RorS)(2or4) = 4" or 2" Round or Square canopy, AL-DKT = T bar non power feed kit, AL-AC = Suspension Cable

↓ Continue the ordering steps on the next page.



Linear Run Connector

STEP - 3

Linear Run Connector



* ALA-FC
= Inline connector

* Each in-line connector can be connect two fixtures
120V continuous run up to 40 FT
277V continuous run up to 100 FT

Optional

STEP - 4

Emergency Battery Backup



EM = Emergency battery backup
(EMBK8WH-A-EXT02)

Diffuser Lens Roll



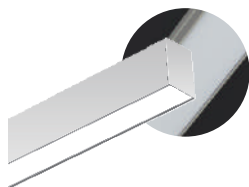
LR42 = 42' diffuser lens roll

End of the ordering step

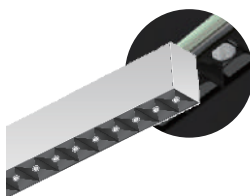
Performance Data:

Lens	Diffuser	Louver	Micro Reflector	Convex
Lengths	2ft , 4ft , 8ft	2ft , 4ft , 8ft	2ft , 4ft , 8ft	2ft , 4ft , 8ft
Wattage	20W/40W/80W	20W/40W/80W	20W/40W/80W	20W/40W/80W
Efficacy	75 lm/W	67 lm/W	100 lm/W	90 lm/W
Beam Angle	Down 100°	Down 60°	Down 48°	Down 110°

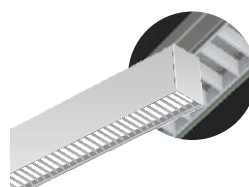
Lens:



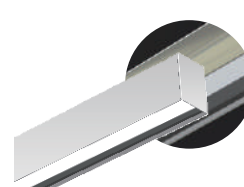
Diffuser
(-D)



Micro Reflector
(-R)



Louver
(-L)



Convex Lens
(-C)

ALA1 Architectural Linear Series

LED Suspended Direct Linear Run Luminaire

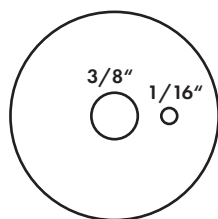
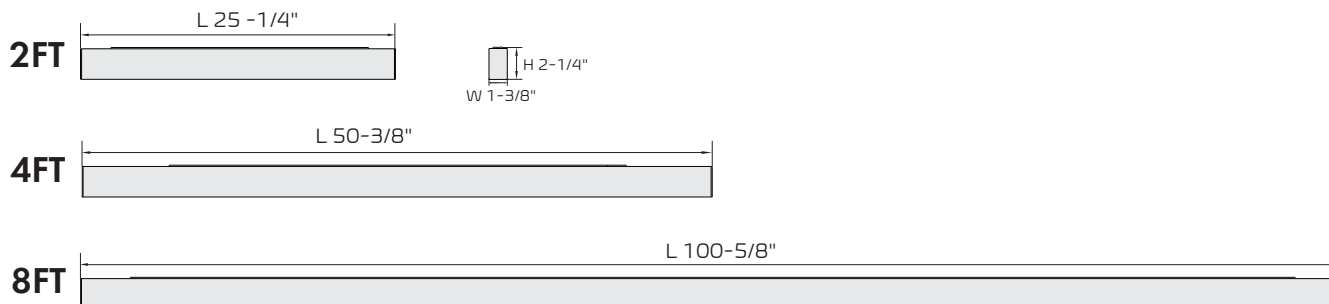
Fixture Type:

Project Name:

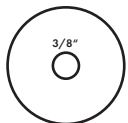
Location:

Date:

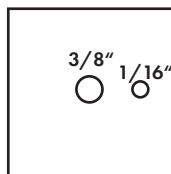
Dimensions:



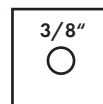
4" Power Feed
Round Canopy



2" Non-Feed
Round Canopy



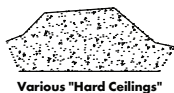
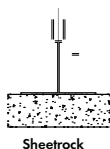
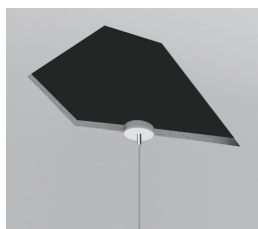
4" Power Feed
Square Canopy



2" Non-Feed
Square Canopy

Ceiling Type:

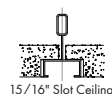
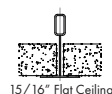
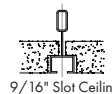
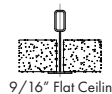
Dry Wall Mount



Drop Ceiling/Off Grid

Compatible for various T grid

- 9/16" Flat
- 15/16" Flat
- 9/16" Slot
- 15/16" Slot



ALA1 Architectural Linear Series

LED Suspended Direct Linear Run Luminaire

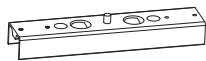
Fixture Type:

Project Name:

Location:

Date:

Line Connection:

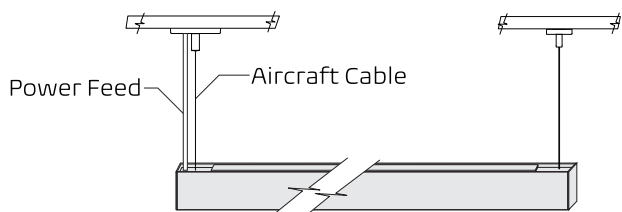


Linear Connector

(-ALA-FC)

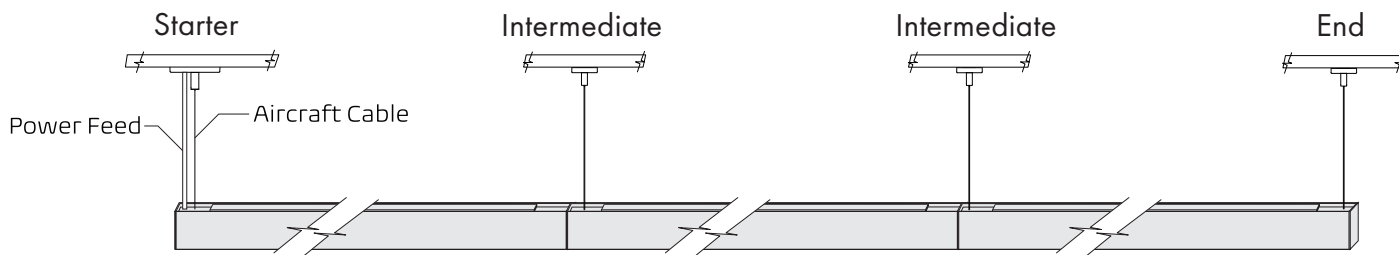
120Vac: Connections up to 40 ft

277Vac: Connections up to 100ft



Mounting point:
24.72" for 2FT fixture
49.8" for 4FT fixture
100.08" for 8FT fixture

Continuous Run



Mounting point:
24.96" for 2FT fixture
50.04" for 4FT fixture
100.2" for 8FT fixture

Mounting point:
25.08" for 2FT fixture
50.28" for 4FT fixture
100.44" for 8FT fixture

Mounting point:
24.96" for 2FT fixture
50.04" for 4FT fixture
100.2" for 8FT fixture