



ALA1 Linear Series

LED Surface Mount Direct Pattern Run Luminaire

Fixture Type:

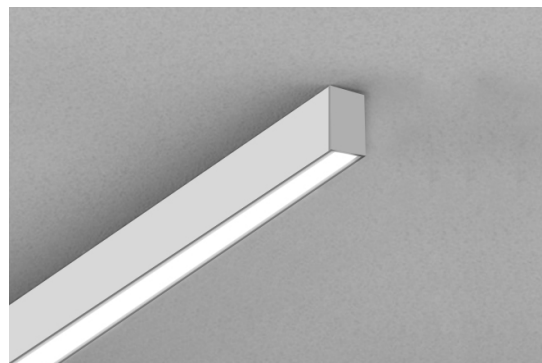
Project Name:

Location:

Date:

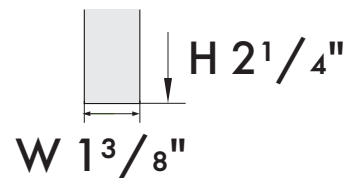
Features:

- 1 3/8" Wide advance architectural linear luminaire available in 2FT, 4FT and 8FT
- Direct lighting distribution
- 4 Lens options
- Various mounting option include pendant mount, wall mount and surface mount - see other spec sheet
- Seamless pattern runs with standard L / T / Cross / Y / V shape or custom pattern
- 120V continuous run up to 40FT and 277V up to 100FT



Product Performance Standard

Size	2FT/4FT/8FT	Power Factor	>0.9
Weight	3.75lb/6.1lb/12.5lb	Life Span	50,000 Hrs
Mounting	Surface Mount	Dimmable	1-10V Dimming
Color Temp	3000K/3500K/4000K	Efficacy	105lm/W
CRI	80	Warranty	5 Years
Input Voltage	120-277V	Ambient Operation Temperature	0C° (32°F) ~40C° (104°F)



Ordering Guide - (Linear Surface Mount direct linear run luminaire)

STEP 1

Fixture	Lens	CCT	Finish	Linear Feet
ALA1 Down light Version	D = diffuser C = Conves L = Louver R = Reflector	30K = 3000K 35K = 3500K 40K = 4000K	WH = White BK = Black	Nominal linear feet = In increments of 2'. fixture lengths com in 2' / 4' / 8' 120V continuous run up to 40 FT 277V continuous run up to 100 FT

↓ Continue the ordering steps on the next page.

Page 1

Last revised: 2-2-2022



10835 S Wilcrest Dr, Ste C Houston TX 77099 | Customer Service : 833-875-4766 | Email : Sales@lironlighting.com

Due to continuous product improvements, specifications and dimensions are subject to change without notice. Certain options have limited compatibility with some other product selections. Consult www.lironlighting.com for most current technical information.

Surface Mount Kit

STEP -2

Mounting

AL-S2/4/8

= Surface Mount Kit for 2/4/8 FT fixture

Pattern Connector - Nominal Linear FT Accessories

STEP - 3

Pattern Connector - Nominal Linear FT

*ALA-CC =
Cross Connector

A'	B'	C'	D'
<input type="checkbox"/>	<input type="checkbox"/>	<input type="checkbox"/>	<input type="checkbox"/>

*ALA-YC =
Y Connector

A'	B'	C'	D'
<input type="checkbox"/>	<input type="checkbox"/>	<input type="checkbox"/>	<input checked="" type="checkbox"/>

*ALA-VC =
V Connector

A'	B'	C'	D'
<input type="checkbox"/>	<input type="checkbox"/>	<input checked="" type="checkbox"/>	<input checked="" type="checkbox"/>

*ALA-TC =
T Connector

A'	B'	C'	D'
<input type="checkbox"/>	<input type="checkbox"/>	<input type="checkbox"/>	<input checked="" type="checkbox"/>

*ALA-LC =
L Connector

A'	B'	C'	D'
<input type="checkbox"/>	<input type="checkbox"/>	<input checked="" type="checkbox"/>	<input checked="" type="checkbox"/>

C = Custom Pattern

Note: See Page 5 for ordering example.

Optional

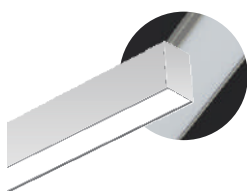
Emergency Battery Backup

EM = Emergency battery backup
(EMBK8WH-A-EXT02)

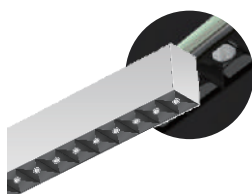
Performance Data:

Lens	Diffuser	Louver	Micro Reflector	Convex
Lengths	2ft , 4ft , 8ft	2ft , 4ft , 8ft	2ft , 4ft , 8ft	2ft , 4ft , 8ft
Wattage	20W/40W/80W	20W/40W/80W	20W/40W/80W	20W/40W/80W
Efficacy	75 lm/W	67 lm/W	100 lm/W	90 lm/W
Beam Angle	Down 100°	Down 60°	Down 48°	Down 110°

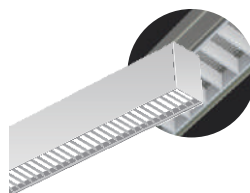
Lens:



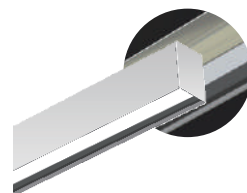
Diffuser
(-D)



Micro Reflector
(-R)

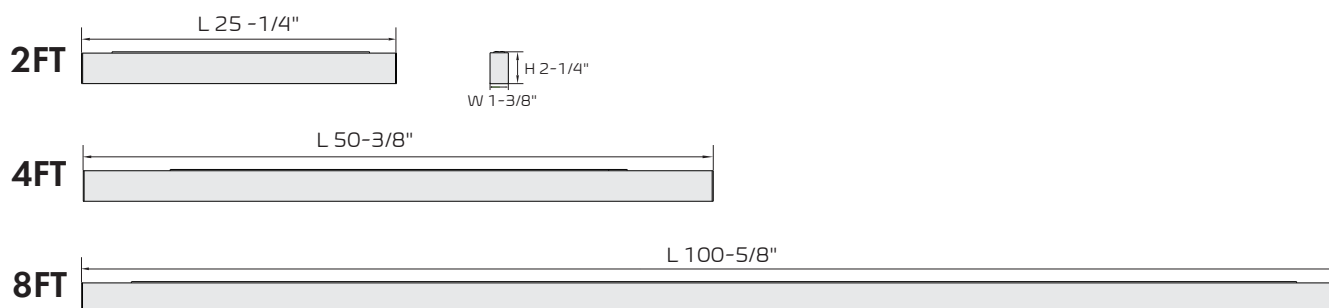


Louver
(-L)



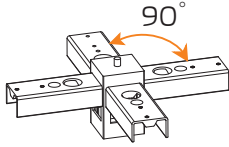
Convex Lens
(-C)

Dimensions:



Fixture Type:
Project Name:
Location:
Date:

Pattern Connector:



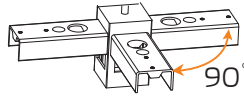
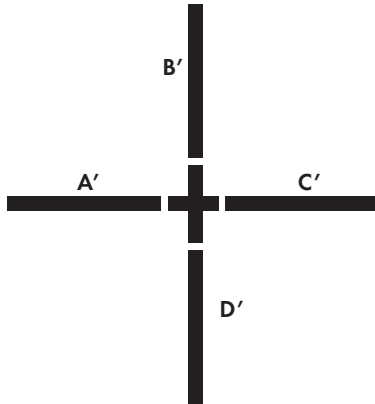
Cross Connector

Provide A/B/C/D dimension

Example: A=4', B=4', C=4', D=4'

Part number:

ALA1-D-35K-AL-DWR44-WH-ALA-CC4444



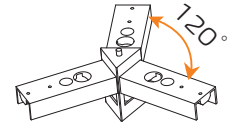
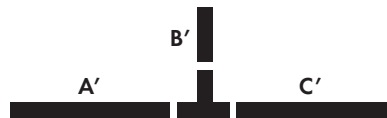
T Shape Connector

Provide A/B/C dimension

Example: A=4', B=2', C=4'

Part number:

ALA1-D-35K-AL-DWR44-WH-ALA-TC424



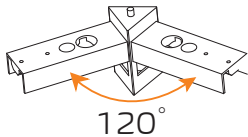
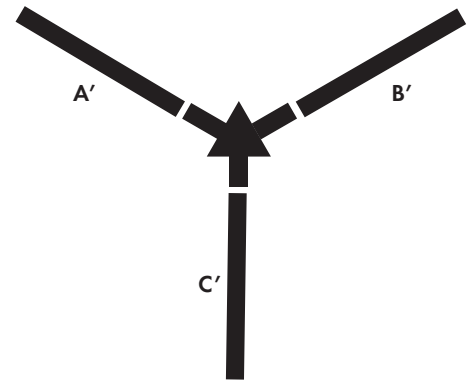
Y Shape Connector

Provide A/B/C dimension

Example: A=4', B=4', C=4'

Part number:

ALA1-D-35K-AL-DWR44-WH-ALA-YC444



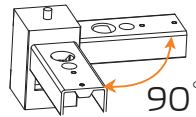
V Shape Connector

Provide A/B dimension

Example: A=4', B=4'

Part number:

ALA1-D-35K-AL-DWR44-WH-ALA-VC44



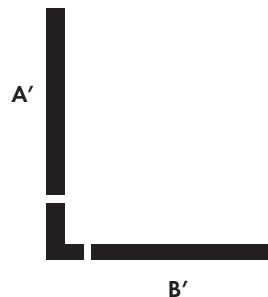
L Shape Connector

Provide A/B dimension

Example: A=4', B=4'

Part number:

ALA1-D-35K-AL-DWR44-WH-ALA-IC44





LED Surface Mount Direct Pattern Run Luminaire

Fixture Type:

Project Name:

Location:

Date:

Custom Pattern:

